

# SMALL BUSINESS

**EXCHANGE**

Voice of Small, Emerging Diversity Owned Businesses Since 1984

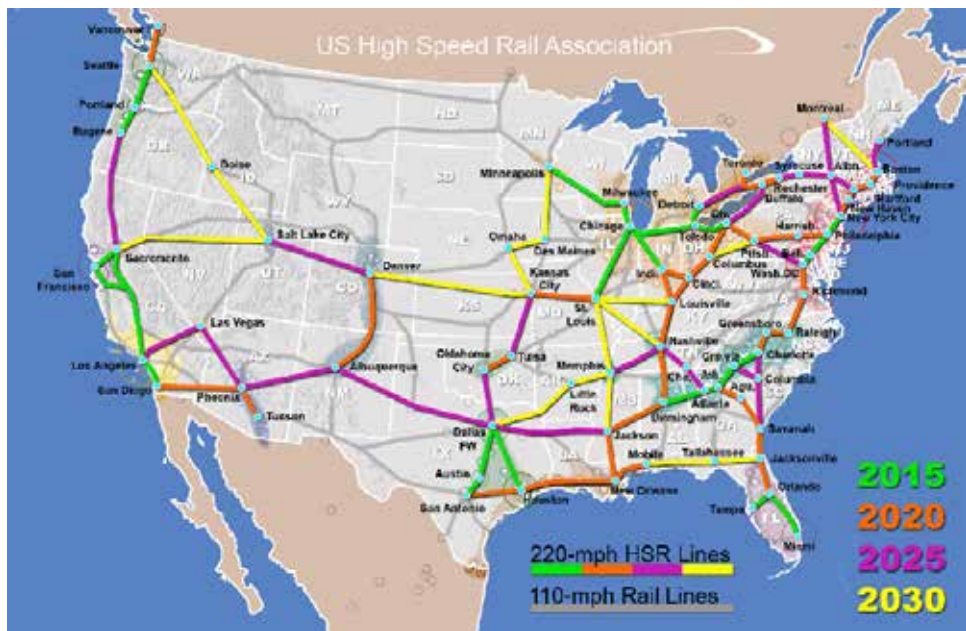
Weekly Publication \$2.00

Vol 30, Edition 10



May 29, 2014

## SBE Welcome ushsr West Coast Rail Conference



The HSR 2014 Conference, being held in San Francisco June 2-4, highlights various topics - global, nationwide and local (California) HSR projects and benefits.

<http://www.ushsr.com/benefits.html>

Our vision is for a 21st century, 17,000 mile national high speed rail system built in 4 phases, for completion by 2030. This new national system will revitalize our economy, reactivate our manufacturing sector, create millions of jobs, end our oil dependency, reduce congestion, and cut our carbon footprint by epic proportions. Powered by electricity, this system provides sustainable, affordable and safe mobility for all.

The map phasing follows the most logical sequence for a national system build out - starting with the largest cities in the busiest corridors, then growing to connect those together across the country. The busiest corridors are known as 'megaregions' and have been studied extensively by the Regional Plan Association. Their analysis and mapping of the 10 megaregions forms the back-

Continued on page 9

### Public Legal Notices



Subject to conditions prescribed by the undersigned, Subcontractors are invited to prequalify to submit bids for the following project:

**UCSC Coastal Biology Building**  
**University of California, Santa Cruz UCSC**  
**Project Number 4932 //**  
**Swinerton Project Number 14085006**

**Swinerton Builders**  
 2880 Lakeside Drive #300  
 Santa Clara, CA 95054

See the full ad on page 11



Image Credit <http://www.eurweb.com>

Maya Angelou at President Bill Clinton's first inaugural address

## Maya Angelou Dies at 86

By Julissa Catalan

Dr. Maya Angelou, celebrated author, educator and civil-rights activist, has died at the age of 86.

According to Winston-Salem, N.C., Mayor Allen Joines, Angelou was found by a caretaker in her North Carolina home following a week of battling recent health complications. In the last month, Angelou canceled what would have been her final appearances due to "health reasons."

After meeting Dr. Martin Luther King Jr. in 1960, Angelou became involved in the civil-rights movement by forming the Cabaret for Freedom to benefit the Southern Christian Leadership Conference (SCLC), becoming the conference's Northern Coordinator.

She also worked closely with Malcolm X in the early 1960s, forming the Organization of Afro-American Unity with him. It was around this same

Continued on page 10

This is a Complimentary Copy. Paid subscribers receive first class mail.

PUBLISHED BY SMALL BUSINESS EXCHANGE, INC.  
 703 Market St., Ste 1000, San Francisco, CA 94103

PSRT STD  
 U.S. Postage  
 PAID  
 San Fran CA 941  
 Permit No. 820

### INSIDE THIS ISSUE:

**Community Outreach**  
 See Page 2 »

**Sub-Bid Request Ads**  
 See Page 3-7, 10 »

**10th Annual Hill Physicians  
 Asian Heritage Street Celebration**  
 See Page 8 »

**Purple Line Extension**  
 See Page 8 »

**Public Legal Notices**  
 See Page 11-13, 15 »

**Access to Capital**  
 See Page 14-15 »

**Classified Ad Order Form**  
 See Page 16 »



# Community Outreach

## What Housing Recovery?

By Peter Dreier

Reprinted with permission from **The New York Times News Service & Syndicate.**

RECENTLY there's been a lot of happy talk about the nation's housing recovery. Frequent reports about rising prices suggest that the tens of millions of people whose homes lost value just have to wait until the recovery reaches their neighborhood to lift them out of crisis. But this supposed housing recovery is bypassing many of our cities and towns.

The total value of America's owner-occupied housing remains \$3.2 trillion below 2006 levels. According to Zillow, a real estate database, 9.8 million households still owe more on their mortgages than the market value of their homes. That's one-fifth of all mortgaged homes. Without government

intervention, many of them are at risk of joining the almost five million households that have already suffered through foreclosure since the housing bubble burst in 2007.

With my colleagues Alex Schwartz of the New School and Gregory Squires of George Washington University, I have identified the 15 metropolitan areas, 100 cities and 395 ZIP codes with the highest proportion of underwater mortgages.

How bad is it? More than 10 million Americans, spread across 23 states, live in ZIP codes where between 43 percent and 76 percent of homeowners are under water. The biggest concentrations are in Georgia, Florida, Illinois, Michigan and Ohio. The cities in the worst shape are Las Vegas, Atlanta, Jacksonville, Orlando and Chicago. Places with so many underwater homes are toxic; they depress the value of surrounding homes and undermine local governments' fiscal health.

The blame for this tragedy lies mostly with banks' risky, reckless and sometimes illegal lending practices. The story is a familiar one. In the late 1990s and early 2000s, millions of Americans bought or refinanced homes in an overheated market. Mortgage brokers lied or misled borrowers about the terms of these mortgages, often pushing borrowers into high-interest subprime loans, even when they were eligible for conventional mortgages.

They particularly targeted minority areas. In 2006, when subprime lending was at its peak, 54 percent of blacks, 47 percent of Latinos and 18 percent of whites received high-priced loans, according to the Federal Reserve Board.

Not surprisingly, the nation's worst underwater areas are disproportionately in black and Latino neighborhoods. In almost two-thirds of the hardest-hit ZIP codes, African-Americans and Latinos

account for at least half of the residents.

The banks' risky loans eventually came crashing down, devastating communities and causing financial havoc. The federal government rescued the banks, but nobody came to the rescue of the communities the banks left behind.

The best solution to this quagmire is for banks and other financial institutions to modify underwater mortgages to their current market value, an approach called "principal reduction." If lenders rewrote the loans to reflect fair-market values, owners would have lower monthly payments, which would free them to put millions of dollars into local economies. Cities would have more stable property tax revenues, and lenders would ultimately benefit by having fewer delinquent loans.

■ Continued on page 7

## Tustin Unified Schools Receive \$600,000 Irvine Company Excellence in Education Grant

- Three-year gift provides 'Irvine Company Digital Learning Coaches' at Orchard Hills School and Beckman High School
- Grant builds on the Irvine Company's historic education support for the Tustin Unified School District

The Irvine Company announced today a \$600,000 philanthropic "Excellence in Education" grant for Orchard Hills School and Beckman High School. The gift will fund technology master teachers who will serve as the 'Irvine Company Digital Learning Coach' at each school. The coaches, who specialize in integrating technology and curriculum in the classroom, will identify best practices in the 1:1 educational learning platform, collaborate with teachers at each school regarding app use and evolution, conduct technology program evaluations and provide ongoing technical support and issue resolution.

"This grant will benefit every child at both of these schools as each student will have either an iPad or laptop," said Tustin Unified School District Superintendent Dr. Gregory Franklin, who

was recently named 2014 California Superintendent of the Year by the Association of California School Administrators. "This funding guarantees that they will receive maximum technical resources to realize the powerful potential of these learning tools sooner than currently possible with existing resources."

Franklin added, "This gift will help these two schools optimize their benefit from our technology bond, part of the district's most important instructional initiative, TUSD Connect. The community and staff worked very hard to ensure its approval so we can provide a 21st century education to our students, and this complements that effort."

The Irvine Company and the Donald Bren Foundation have a long history of consistent, generous and passionate support of education in the school districts located on The Irvine Ranch. They have invested more than \$200 million supporting students, teachers, principals, individual schools, school districts, universities and university scholars on The Irvine Ranch. The Irvine Company's innovative education philanthropy, public policy ini-

tiatives and comprehensive planning have helped create and sustain some of the most successful and highly recognized school districts in the State of California.

"The Irvine Company and Tustin Unified School District have enjoyed a long partnership for many decades," said Robin Leftwich, Vice President, Irvine Company. "Planning for and providing quality public education has been an integral part of our master planning, and this gift is the latest example as it will address the most important programmatic issue these schools face in the 21st century classroom."

Since opening for enrollment in fall of 2010, Orchard Hills School has become one of Orange County's most sought-after schools. Most recently the school was ranked No. 3 in the Orange County Register's 2014 middle school rankings and Orchard Hills has also received a perfect "10" rating from the California Department of Education.

Ranked third among all public schools in Orange County by the Washington Post, Beckman High School has twice been named a California

"This grant will benefit every child at both of these schools as each student will have either an iPad or laptop"

Dr. Gregory Franklin  
Tustin Unified School District  
Superintendent

Distinguished School and is consistently acknowledged as one of the top high schools in the nation by U.S. News and World Report, placing Beckman in the top 1% of all high schools in the country.

Educational excellence is the hallmark of schools on The Irvine Ranch, and a principal reason people choose to live in the Villages of Irvine™. For more information about the Irvine Company's investment in education, visit: [www.irvinecompany.com](http://www.irvinecompany.com).

Source: ©2014 Business Wire

### Editorial Staff

#### Publisher:

Gerald W. Johnson [gwj@sbeinc.com]

#### Outreach & Managing Editor:

Valerie Voorhies [vvh@sbeinc.com]

#### General Manager:

Kevin Grant [kgrant@sbeinc.com]

#### Production Staff

#### Sales & Production Manager:

Nabil Vo [nvo@sbeinc.com]

#### Sales

Willie Sims [wsims@sbeinc.com]

#### Graphics Design:

Tyler Chen [tchen1129@gmail.com]

#### Webmaster:

Umer Farooq [umer@octadyne.com]

#### Writer:

Cheryl Hentz [cheryl.hentz@gmail.com]

703 Market Street, Suite 1000

San Francisco, CA 94103

Email: [sbe@sbeinc.com](mailto:sbe@sbeinc.com)

Website: [www.sbeinc.com](http://www.sbeinc.com)

Telephone: (415) 778-6250, (800) 800-8534

Fax: (415) 778-6255

Office Hours: 8:00 a.m. - 5:00 p.m.

### AWARDS

#### • CITY OF LOS ANGELES

Black Business Association,  
Outstanding Entrepreneur  
Mayor's Advisory Board,  
Outstanding Achievement as a Vendor/Supplier

#### • COUNTY OF LOS ANGELES

Black Business Association,  
Outstanding Entrepreneur

#### • BAY AREA CONTRACT COMPLIANCE

OFFICERS ASSOCIATION  
Champion of Diversity

#### • NAMCSC

Minority Advocate

• 2014 Black History Month Award for  
Commitment and Service to the African American  
Community

Minority Advocate

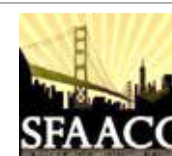
### CALIFORNIA CERTIFICATIONS



#### • CPUC Clearing House

#### • San Francisco Human Rights Commission

### MEMBERSHIP



EDITORIAL POLICY—The Small Business Exchange is published weekly. Publication is extended by one day for weeks in which holiday occurs on a Monday.

Copyright © 2014 Small Business Exchange, Inc.

The Small Business Exchange is adjudicated as a newspaper of general circulation by the Superior Court of the City and County of San Francisco, State of California, under the date January 29, 1988. Organized 1984.

NOTICE: SBE is not liable to any subscriber or any other user for any damages or any other costs incurred in connection with the utilization of, or any other reliance upon, any information contained in its newspapers. The information contained herein may be subject to typographical error in the transcribing and/or printing of its contents. Information contained in this publication is intended only as notification to its subscribers of available bidding and contracting opportunities. The SBE reserves all rights in connection with this publication and prohibits the duplication of the contents herein without the expressed written consent of the SBE. Subscription fees are nonrefundable.

# California Sub-Bid Request Ads

## REQUESTING BIDS FROM QUALIFIED DBE SUBCONTRACTORS AND SUPPLIERS FOR THE FOLLOWING PROJECT:

**Route 101/280 - Replace Barrier Railings**  
**San Francisco County, Caltrans Project #04-1A5514, Bid Date: June 10, 2014 at 2:00 pm**

We hereby encourage responsible participation of local Disadvantaged Business Enterprises (8% Goal), and solicit their subcontractor or material quotation for the following types of work. This is a highway project with the typical items of work associated, but not limited to: Lead Compliance Plan, Construction Area Signs, Traffic Control System, Remove Striping & Pavement Markers, Striping & Pavement Markers, PCMS Boards, Remove Guardrail, Remove Roadside Sign, Carbon Fiber Reinforced Polymer Strip, Core Concrete, Clean Bridge Deck Drainage System, Salvage Metal Bridge Railing, Reconstruct Deck drain Grate, Remove Unsound Concrete, Refinish Bridge Deck, Construction/Equipment Rentals, Traffic Control, Furnish Single Sheet Aluminum Sign, Metal (Barrier Mounted Sign), Misc. Metal (Bridge), Midwest Guardrail System (7' Wood Post), Crash Cushion, Bridge Removal (Portion), Temporary Railing (Type K), Temp. Crash Cushion, Temp. Traffic Screen, Structural Concrete (Bridge and Barrier Slab), Paving Notch Extension, Clean Expansion Joint, Joint Seal, Joint Seal Assembly, Bar Reinforcing Steel (Bridge), Job Site Management, Prepare Water Pollution Control Plan, Temp. Drainage Inlet Protection, Temp. Concrete Washout, Concrete Barrier, Transition Railing, End Cap (Type A), Crash Cushion (Sand Filled), Maintain Existing Traffic Management System, Lighting, Lighting and Sign Illumination, Misc. Construction Supplies, Trucking, etc.

C.C. Myers, Inc. is willing to break down items of work into economically feasible units to encourage DBE participation. If you are interested in any of this work, please provide us with a scope letter or contact us immediately. Plans and Specifications are available from Caltrans at: [www.dot.ca.gov/hq/esc/oe](http://www.dot.ca.gov/hq/esc/oe).

Conditions or exceptions in Subcontractor's quote are expressly rejected unless expressly accepted in writing. Subcontractor and Supplier quotes are required 24 hours prior to the bid date to enable thorough evaluation.

### C.C. Myers, Inc.



3286 Fitzgerald Rd. • Rancho Cordova, CA 95742 • 916-635-9370 • Fax 916-635-1527

Each Subcontractor shall be prepared to submit faithful performance and payment bonds equal to 100% of their quotation. The Contractor will pay standard industry rates for these bonds.

Contact C. C. Myers, Inc. for assistance with bonds, insurance, lines of credit, equipment, supplies or project plans and specifications. C.C. Myers, Inc., is a Union Contractor.

AN EQUAL OPPORTUNITY EMPLOYER

Sub-Bids Requested from qualified MBE/WBE/DBE Subcontractors and Suppliers For:

### WATER RECLAMATION FACILITY NO. 2 TERTIARY FILTRATION PROJECT

**PROJECT NO. NIB DWP 14-115CA**

**Owner: City of Corona**

**Location: Corona, CA**

**Bid Date: June 25, 2014 @ 2:00 P.M.**

### J.F. Shea Construction, Inc.

667 Brea Canyon Road, Suite 30 • Walnut, CA 91788-0489

Phone: (909) 595-4397, Fax: (909) 444-4268

Contact: [Lori Olivas, lori.olivas@jfshea.com](mailto:Lori.Olivas@jfshea.com)

J.F. Shea Construction, Inc. is soliciting your participation in the preparation of this bid. We are particularly interested in bids from subcontractors/suppliers for the following work items: Demolition, Shoring, AC Paving, Ready-Mix Concrete, Reinforcing Steel, Precast Concrete Structures, Structural Steel, Miscellaneous Metals, FRP Fabrications, Access Hatches, Painting & Coatings, Signage, Pre-Fabricated Structures, Electrical & Instrumentation

Plans and Specifications are available: Free of charge from the City of Corona's website at <http://discovercoronadwp.com/bids/index.shtml>. Plans may also be viewed at [www.dodge.construction.com](http://www.dodge.construction.com) or at our Walnut Office.

J.F. Shea Construction, Inc. is an equal opportunity employer and intends to negotiate in good faith with interested MBE/WBE/DBE firms and intends to utilize the lowest responsive bidder. J.F. Shea expects potential subcontractors to be bondable. J.F. Shea will pay for up to 1% for subcontractor bond costs. Subcontractors and Suppliers are expected to bid per plans and specifications, including requirements for warranties. Standard manufacturer's warranties, if not in conformance with owner's specifications, will not be accepted.

Sub-Bids Requested From Qualified DBE Subcontractors & Suppliers

### For Construction on State Highway In Los Angeles County From Orange County Line To Route 10/605 Separation

**Location: 07-LA-605—R0.0/20.5**

**Contract No. 07-295704**

**Bid Date: 6-5-2014 @ 2:00 PM**

We have information about the plans, specifications, and requirements in our office located at 14425 Joanbridge Street, Baldwin Park, CA. Please call to arrange an appointment, our office hours are 8:00 am to 4:30 pm. Copying services are available.

### Chumo Construction, Inc.

14425 Joanbridge Street • Baldwin Park, CA 91706

Phone: (626) 960-9502 • Fax: (626) 960-3887

Contact: **George Chumo**

100% Performance and Payment Bonds with a surety company subject to approval of Chumo Construction Company, Inc. are required of subcontractors for this project. Chumo Construction will pay bond premium up to 1.5%. Subcontractors will be required to abide by terms and conditions of the AGC Master Labor Agreements and to execute an agreement utilizing the latest AGC Standard Long Form Subcontract incorporating prime contract terms and conditions, including payment provisions. Chumo Construction's listing of a Subcontractor is not to be construed as an acceptance of all of the Subcontractor's conditions or exceptions included with the Subcontractor's price quote. Chumo Construction requires that Subcontractors and Suppliers price quotes be provided at a reasonable time prior to the bid deadline to enable a complete evaluation. For assistance with bonding, insurance or lines of credit contact George Chumo at (626) 960-9502.

An Equal Opportunity Employer

## Small Business Exchange

### The Sub-Bid Request Specialist

It's takes a sharp pencil and qualified, competitive sub-contractors, vendors, and suppliers to win the bid and achieve the diversity goals.  
**Look no further. We have them all in our database**

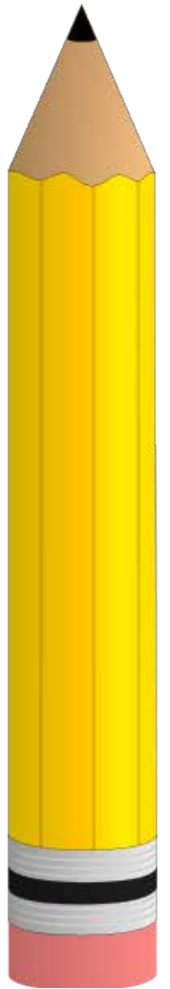
Need construction contractors and suppliers familiar with public contracting, bondable certified by cities, states and federal, and willing to work in one or many locations?  
**We have that, too.**

Want to reach them by industry-specific codes (NAIC/SIC/UNSPSC)  
**We can do that, too**

The next time you're bidding project where time and accuracy are of the essence, call us.  
**We'll make it happen.**

We are on the move to make your business better.

**Call 1-800-800-8534**



Kiewit Infrastructure West Co. requests quotes from subcontractors and suppliers including Small and Very Small Business Enterprises (SBE/VSBE) certified in POLB's Planet Bid System, for the following project:

### CITY OF LONG BEACH - HARBOR DEPARTMENT FIREBOAT 15 DOCK UPGRADE AT PIER F, BERTH F202 As Described in SPECIFICATION HD-S2495

**BID DATE: JUNE 3, 2014 PRIOR TO 10:00AM**

We are accepting quotes for the following Subcontract Work Scopes, Services and Supplies: Demolition/ Disposal of existing Floating Dock, New Floating Dock & Hardware, Furnish Steel Pipe Piling, Site Inspection, Marine Survey, Diving, Miscellaneous Metal Fabrications (Steel Float Connections, Bolts & UHMW Pads), Furnish (5) 'Donut' Fenders & Bollard Crowns (Including UHMW Bearing pads, steel pipe core, foam core, polyethylene skin, structural steel), Trucking, Tug Service, Fuel and other work.



### Kiewit Infrastructure West Co.

33455 6th Ave South, Federal Way, WA 98003

Phone: (253) 943-4200 • Fax: (253) 943-4021

Subcontractors and suppliers can access Contract Documents (plans and specifications) by calling Kiewit Staff (below) or in DVD format at No Cost from Port of Long Beach, 4th Floor, Plans and Specifications, IOA Building, 4801 Airport Plaza Drive - Long Beach, CA 90815 during business hours 7:30 am to 4:30 pm except noon to 1 pm, Monday through Friday. For Contract Documents Phone POLB @ (562) 283-7353; General project info found at: <http://www.planetbids.com/portal/portal.cfm?CompanyID=19236>

Inquires - Contact Bill Hoodenpyle (253) 943-4200 or Todd Wille (253) 943-4200; or

Dennis Ahl - Small & Disadvantaged Business Liaison (253) 943-4070 ([dennis.ahl@kiewit.com](mailto:dennis.ahl@kiewit.com))

In order to assist certified SBE/VSBE Contractors and Suppliers, we will divide scopes of work into economically feasible units, and will assist firms with delivery schedules, putting SBE's in touch with professionals regarding bonding and lines of credit; and will answer questions regarding marine insurances and equipment in support of Small Businesses in order to maximize participation.

Equal Opportunity Employer

## Advertise with the Small Business Exchange

Utilize SBE's TARGET DISTRIBUTION to reach the DBEs, SBEs, DVBEs, MBEs, and OBEs that match the trades and goods you need.  
[www.sbeinc.com](http://www.sbeinc.com)



# California Sub-Bid Request Ads

Seeking **SBE, DBE, DVBE, Emerging and Local Businesses**  
Subcontractor for the following project:

**Valley College Athletic Training Facility**  
**Los Angeles Community College District (LACCD)**  
**Los Angeles Valley College**  
**5200 Fulton Ave., Van Nuys, CA 91401**

**Current due dates:**  
**Written RFCs : June 11th @ 12:00pm**  
**Scope Letter: June 16th**  
**Final Bid: June 19th @ 2:00pm**

Project consists of a Stadium Field House, a Baseball / Softball Field House, a Baseball Field and (2) Softball Fields, and an Archery, Hammer Throw and Discus throw area which includes an Archery storage shed. The Stadium Field House is a 20,945 square feet facility on one floor including team and coaches locker rooms, weight room, sports medicine room, meeting room, coaches offices, and equipment storage and laundry. It is a Type II B Construction, load-bearing masonry walls and steel roof framing. The Baseball/Softball Field House is a 10,738 square feet facility on one floor including team and coaches' locker rooms, sports medicine room, coaches' offices, field storage, public restrooms, and a concession. It is a Type II B Construction, load-bearing masonry walls and steel roof framing. The Baseball Field has synthetic turf and includes bleacher seating for 512 with a 144 square foot press box (Press box and Bleachers are not part of this contract), dugouts, bullpens, batting cages, and perimeter fencing. The (2) Softball Fields have synthetic turf and include 4 tier bleacher seating for 150 and a 144 square foot press box for each Field, dugouts, bullpens, batting cages, and perimeter fencing. Project includes all indicated site work such as utility connections, parking, site paving, landscaping, and site lighting.

- Prevailing Wage
- SBE, DBE, DVBE, Emerging and Local Businesses strongly encouraged
- Project Labor Agreement per LACCD in effect

**Pankow**

199 S. Los Robles Ave, Suite 300  
Pasadena, California 91107  
(626) 304-1190 • (626) 696-1782 Fax  
Contact: **Monica Jimenez** • mjimenez@pankow.com

REQUEST FOR DBE SUBCONTRACTORS AND SUPPLIERS FOR:

**Hwy 4/242 Install Ramp Metering and TOS Elements**  
**Contra Costa County – Martinez/Concord/Pittsburg**  
**Caltrans #04-152724**

**BID DATE: June 17, 2014 @ 2:00 PM**

We are soliciting quotes for (including but not limited to): Trucking, Lean Compliance Plan, Construction Area Signs, Traffic Control System, Portable Changeable Message Sign, SWPPP, Rain Event Action Plan, Storm Water Sampling and Analysis, Storm Water Annual Report, Temporary Erosion Control, Sweeping, ADL Burial Location Report, Treated Wood Waste, Noise Monitoring, Bridge Removal (Portion), Clearing & Grubbing, Roadway Excavation (Type Y-1 ADL), Structure Excavation, Structure Backfill, Soil Amendment, Slow-Release Fertilizer, Planting & Irrigation, Erosion Control, Hydroseed, Compost, AC Dike, Soil Nail, CIDH Concrete Pile, Structural Concrete, Minor Concrete (Minor Structure), Random Rough Stacked Rock Texture, Bar Reinforcing Steel, Structural Shotcrete, Sign Structure, Roadside Signs, Underground, Rock Slope Protection, Minor Concrete (Curb, Gutter, Sidewalk), Detectable Warning Surface, Misc. Iron & Steel, Guard Railing Delineator, Object Marker, Special Marker, Fencing, Midwest Guardrail System, Chain Link Railing, Concrete Barrier, Transition Railing, Striping & Marking, Signal & Lighting, and Construction Materials

**O.C. Jones & Sons, Inc.**

1520 Fourth Street • Berkeley, CA 94710 • Phone: 510-526-3424 • FAX: 510-526-0990

Contact: **Jean Sicard**

An Equal Opportunity Employer

100% Performance & Payment Bonds may be required. Worker's Compensation Waiver of Subrogation required. Please call OCJ for assistance with bonding, insurance, necessary equipment, material and/or supplies. OCJ is willing to breakout any portion of work to encourage DBE Participation. Plans & Specs are available for viewing at our office or through the Caltrans Website at [www.dot.ca.gov/hq/esc/oe/weekly\\_ads/index.php](http://www.dot.ca.gov/hq/esc/oe/weekly_ads/index.php).

We are requesting bid proposals from all Subcontractors/Suppliers and DVBE  
Subcontractors/Suppliers for the following

**Owner: San Francisco Unified School District**  
**Project Name: A.B. 211 DOOR LOCKSET REPLACEMENT AT VARIOUS SITES, BID PACKAGE 4**  
**Project No.11630**  
**Location: San Francisco, CA**  
**Bid date: 6/6/14 @ 11 AM**

**Please e-mail or fax proposals by 8 AM on Friday, June 6**

**Apollo Construction Co.**

1127 Shafter Avenue • San Francisco, CA 94124  
Phone: 415-587-7452 • Fax: 415-587-1404

Contact: **Christos Mastrokyriakos**

E-mail: [ApolloChristos@aol.com](mailto:ApolloChristos@aol.com)

An Equal Opportunity Employer

The R C Foster Corporation is planning on bidding the Water Reclamation Facility No. 2 Tertiary Filtration Project in the City of Corona on Wednesday, July 02, 2014 at 2:00 PM. We would like to invite you to bid on any portion of the project that you can to us. Please go to our File Transfer Site (FTP://FTP.RCFOSTER.COM) where the Plans and Specifications have been posted.

The following trades are required: Survey, Cathodic Protection, Facilities rentals, Soil Import, Paving, Structural Steel, Miscellaneous metals, Painting & Coating, Electrical and Rebar.

For the user enter "Guest" and for the password, enter "RCFOSTER" both are case sensitive. You will see in the folder "Projects Bidding" the documents for the City of Corona DWP WRF2 Tertiary Filtration Project.

This project is subject to requirements set forth under the State Water Resources Control Board's U.S. EPA Assisted Clean Water State Revolving Fund Loan Program which requires Bidders to cooperate with and exercise "Good Faith Efforts" (GFE) to achieve participation of Disadvantaged Business Enterprises (DBEs).

If you qualify as a DBE please fill out form FPA Form 6100-3, found on our FTP site and include it with your bid to us. We will also require a copy of your proof of certification to include with the bid.

**Please let us know if you plan on Bidding.**

If you require any additional assistance, please contact us.

**R C Foster Corporation**

PO Box 77055 • Corona, CA 92877  
(951) 738-8211 • (951) 738-8215 FAX  
(909) 331-0167 Cell

Email: [glen@rcfoster.com](mailto:glen@rcfoster.com)

Contact: **Glen Langer, Chief Estimator**



Is requesting quotes from qualified  
SBE/DVBE Subcontractors, Suppliers,  
and Service Providers for the following  
(but not limited to) work:

Fence, Drill and Blast Rock, Rock Crushing,  
AC Pavement, Signs and Striping,  
Instrumentation, Cement Deep Soil Mixing,  
Dewatering, Rebar, Well Installation, Rock  
Anchors, Hydroseeding, Misc. Metal, RCP,  
PVC Pipe, Ready Mix, Trucking, Survey,  
QA/QC, Security, Field Office, SWPPP

**Seismic Remediation of Dam Embankment**  
– **Perris Dam**

**Riverside County, CA**

**Department of Water Resources**

**Contract No. C51484**

**SBE Goal: 25% with DVBE incentive**

**BID DATE: June 26, 2014 @ 11:00 a.m.**

**Sub & Vendor Bids Due Prior**

**Sukut Construction, LLC**

4010 W. Chandler Avenue, Santa Ana, CA 92704

Contact: **Steve Reiser**

Phone: (714) 540-5351 • Fax: (714) 545-2003

Email: [estimating@sukut.com](mailto:estimating@sukut.com)

Plans/specs are available for viewing at our office by appointment, or may be obtained from Department of Water Resources. Subcontractors must be prepared to furnish 100% performance and payment bonds and possess current insurance and workers' comp coverage. Sukut Construction will assist Qualified Subcontractors in obtaining bonds, insurance, and/or lines of credit. Please contact Sukut Construction for assistance in responding to this solicitation. Subcontractors/Vendors will be required to sign Sukut's Standard Subcontract/Purchase Order. Copies are available for examination.

Sukut Construction's listing of a Subcontractor in its bid to the agency is not to be construed as an acceptance of all of the Subcontractor's conditions or exceptions included with Subcontractor's price quotes. Quotations must be valid for the same duration as specified by Owner for contract award.

**Sukut Construction, LLC**  
**An Equal Opportunity Employer**

## Small Business Exchange

### The Sub-Bid Request Specialist

It's takes a sharp pencil and qualified, competitive sub-contractors, vendors, and suppliers to win the bid and achieve the diversity goals.

**Look no further.**  
**We have them all in our database**

Need construction contractors and suppliers familiar with public contracting, bondable certified by cities, states and federal, and willing to work in one or many locations?

**We have that, too.**

Want to reach them by industry-specific codes (NAIC/SIC/UNSPSC)  
**We can do that, too**

The next time you're bidding project where time and accuracy are of the essence, call us.  
**We'll make it happen.**

We are on the move to make your business better.

**Call**  
**1-800-800-8534**



# California Sub-Bid Request Ads

## SKANSKA

**2014 Pavement Overlay and Reconstruction**  
**City of Palm Springs**  
**City Project No.: 14-04**  
**DBE Goal: 3.84%**  
**Bid Date: June 5, 2014 – 3:00PM**

Skanska is interested in soliciting in Good Faith all subcontractors as well as certified DBE companies for this project. All interested subcontractors, please indicate all lower tier DBE participation offered on your quotation as it will be evaluated with your price. Please call if we can assist you in obtaining bonding, lines of credit, insurance, necessary equipment, materials and/or supplies. Skanska will also review breaking out scope packages and adjusting schedules to help permit maximum participation.

Plans and Specifications are available for view at our main office in Riverside or at the office of the City Engineer, 3200 East Tahquitz Canyon Way, Palm Springs, Ca 92262.

**Quotes requested for contractors, suppliers and service providers include, but are not limited to:** Job Site Management, Storm Water Pollution Plan, Street Sweeping, Construction Area Signs, Traffic Control System, Traffic Striping and Markings, Portable Changeable Message Signs, Upgrade Existing Curb Ramps, Hot Mix Asphalt, Place Hot Mix Asphalt, Cold Mill Existing AC Pavement – Full Depth.

Subcontracting Requirements: Skanska's insurance requirements are Commercial General Liability (GL): \$1M ea. occ., \$1M personal injury, \$2M products & completed operations agg. and general agg.; \$1M Auto Liability; \$5M Excess/Umbrella and \$1M Workers Comp. Endorsements and waivers required are the Additional Insured End., Primary Wording End., and a Waiver of Subrogation (GL & WC). Other insurance requirements may be necessary per scope. Subcontractors may be required to furnish performance and payment bonds in the full amount of their subcontract by an admitted surety and subject to approval by Skanska. Skanska will pay bond premium up to 1%. Quotations must be valid for the same duration as specified by the Owner for contract award. Conditions or exceptions in Subcontractor's quote are expressly rejected unless accepted in writing. Skanska is signatory to the Operating Engineers, Laborers, Cement Masons, Carpenters Unions and Teamsters. Subcontractors must provide weekly, one original and one copy of all certified payrolls, including non-performance and fringe benefit statements if required by law or by the Prime Contract. Subcontractor scope (including any conditions or exceptions) is required 24 hours prior to bid deadline to allow proper evaluation.

**Skanska is an Equal Opportunity Employer**

Skanska Estimating Dept: 1995 Agua Mansa Rd, Riverside, CA 92509 – Ph: (951) 684-5360, Fax: (951) 788-2449  
 Email: joe.sidor@skanska.com

DESERT MECHANICAL, INC.  
 IN RESPONSE TO THE TRANSBAY JOINT POWERS AUTHORITY'S (OWNER)  
 SMALL BUSINESS ENTERPRISE (SBE) PROGRAM, REQUEST  
 SUB-BIDS FROM QUALIFIED SMALL BUSINESS ENTERPRISES (SBEs) FOR  
**TRANSBAY TRANSIT CENTER, SAN FRANCISCO, CALIFORNIA**  
**WEBCOR/OBAYASHI JOINT VENTURE**  
**TRADE PACKAGE #TG10.2: PLUMBING**  
**CONTRACT NO. 301001002**  
**BID DATE: JUNE 18, 2014 @ 1:00 PM**  
**(818) 362-4591 (OFFICE) \* (818) 362-0866 (FAX)**

**INCLUDING, BUT NOT LIMITED TO, THE FOLLOWING TRADES:** PLUMBING SUB-CONTRACTORS, PLUMBING PIPING EQUIPMENT & MATERIALS VENDORS, PLUMBING FIXTURE VENDORS, INSULATION SUBCONTRACTORS, SEISMIC SUPPORT SUPPLIERS, RENTAL EQUIPMENT, STORAGE TRAILERS, ENGINEERING SERVICES, TOOL RENTALS, WELDING AIR & GAS SUPPLIERS, TEMPORARY OFFICE PERSONNEL, CONCRETE CORING/CUTTING, STORAGE YARD SPACE, WAREHOUSE SPACE, SECURITY SERVICES, SAFETY SERVICES, CHEMICAL TREATMENT SUBCONTRACTORS AND VENDORS

COPIES OF PLANS AND SPECIFICATION CAN BE OBTAINED FROM:

DESERT MECHANICAL, INC., ATTN: JEFF PATRICK

PLANS AND SPECIFICATIONS MAY ALSO BE VIEWED AT CERTAIN PUBLIC, PRIVATE AND MINORITY PLAN ROOMS OR AT DESERT MECHANICAL, INC.'S OFFICE AT 15870 OLDEN STREET, SYLMAR, CALIFORNIA, CONTACT JEFF PATRICK @ (818) 362-4591  
 DESERT MECHANICAL, INC., INTENDS TO CONDUCT ITSELF IN GOOD FAITH WITH SMALL BUSINESS ENTERPRISES REGARDING PARTICIPATION ON THIS PROJECT  
 NOTE: ASSISTANCE WILL BE GIVEN IN OBTAINING BONDS, LINES OF CREDIT AND/OR INSURANCE AS WELL AS NECESSARY EQUIPMENT, SUPPLIES, MATERIALS OR RELATED ASSISTANCE OR SERVICES

An Equal Opportunity Employer

REQUEST FOR MBE/WBE/DBE SUBCONTRACTORS AND SUPPLIERS FOR:

**Breuner Marsh Restoration & Public Access Improvement**  
**Project Phase 1**  
**East Bay Regional Park District**  
**REVISED BID DATE: June 2, 2014 @ 2:00 PM**

**We are soliciting quotes for (including but not limited to):** Trucking, Storm Water Prevention Plan, Storm Water Annual Report, Demolition, Clear & Grub, Erosion Control, Hydroseeding, Landscaping & Planting, Precast Inlets, Construction Surveying and Construction Materials

**O.C. Jones & Sons, Inc.**

1520 Fourth Street • Berkeley, CA 94710 • Phone: 510-526-3424 • FAX: 510-526-0990  
 Contact: Jean Sicard

An Equal Opportunity Employer

100% Performance & Payment Bonds may be required. Worker's Compensation Waiver of Subrogation required. Please call OCJ for assistance with bonding, insurance, necessary equipment, material and/or supplies. OCJ is willing to breakout any portion of work to encourage MBE/WBE/DBE Participation. Plans & Specs are available for viewing at our office.

## DVBE INFORMATION SESSION

Two Dates,  
Two Locations

San Francisco Bay Area Rapid Transit District  
 Office of Civil Rights invites you to attend

### Disabled Veteran Business Enterprise Information Forums

CONSTRUCTION \* PROFESSIONAL SERVICES \* PROCUREMENT OF GOODS & SERVICES



#### Disabled Veteran Business Enterprise Forums



Tuesday  
 June 3, 2014  
 9:30am Registration  
 10am Forum Begins



Courtyard by Marriott  
 Pleasant Hill  
 2250 Contra Costa Blvd  
 Pleasant Hill, CA 94523

To RSVP Contact:  
 Victoria Chavez  
 victoria@360tpr.com

REGISTER NOW

San Francisco Bay Area Rapid Transit District (BART) is hosting two information sessions for Disabled Veteran Business Enterprises (DVBE) on June 3, 2014 and June 9, 2014. We invite you to attend one of these forums to learn more about BART's contracting opportunities, small business programs, certification requirements, and bonding program. It is BART's policy to encourage the participation of Small Businesses including DVBE's on BART Contracts.



Monday  
 June 9, 2014  
 9:30am Registration  
 10am Forum Begins



San Francisco  
 State Building  
 455 Golden Gate Ave  
 San Francisco, CA 94102

To RSVP Contact:  
 Victoria Chavez  
 victoria@360tpr.com

REGISTER NOW



#### REMINDER

Bring Government-issued I.D. for entry.  
 Please be aware that you will be screened prior to entering the State Building per state law.

Forward this email

STAY CONNECTED

DESERT MECHANICAL, INC.  
 IN RESPONSE TO THE TRANSBAY JOINT POWERS AUTHORITY'S (OWNER)  
 SMALL BUSINESS ENTERPRISE (SBE) PROGRAM, REQUEST SUB-BIDS FROM  
 QUALIFIED SMALL BUSINESS ENTERPRISES (SBEs) FOR  
**TRANSBAY TRANSIT CENTER, SAN FRANCISCO, CALIFORNIA**  
**WEBCOR/OBAYASHI JOINT VENTURE**  
**TRADE PACKAGE #TG10.3: HEATING, VENTILATING AND AIR CONDITIONING**  
**CONTRACT NO. 301001003**  
**BID DATE: JUNE 17, 2014 @ 3:00 PM**  
**(818) 362-4591 (OFFICE) \* (818) 362-0866 (FAX)**

**INCLUDING, BUT NOT LIMITED TO, THE FOLLOWING TRADES:** SHEETMETAL SUB-CONTRACTORS, PIPING SUBCONTRACTORS, REFRIGERATION SUBCONTRACTORS, SHEETMETAL FABRICATION SHOPS, PIPING FABRICATION SHOPS, PIPING MATERIAL & EQUIPMENT VENDORS, HVAC EQUIPMENT VENDORS, INSULATION SUBCONTRACTORS, SEISMIC SUPPORT SUPPLIERS, RENTAL EQUIPMENT, STORAGE TRAILERS, ENGINEERING SERVICES, TOOL RENTALS, WELDING AIR & GAS SUPPLIERS, TEMPORARY OFFICE PERSONNEL, WAREHOUSE SPACE, CHEMICAL TREATMENT SUBCONTRACTORS AND VENDORS

COPIES OF PLANS AND SPECIFICATION CAN BE OBTAINED FROM  
 DESERT MECHANICAL, INC., ATTN: JEFF PATRICK

PLANS AND SPECIFICATIONS MAY ALSO BE VIEWED AT CERTAIN PUBLIC, PRIVATE AND MINORITY PLAN ROOMS OR AT DESERT MECHANICAL, INC.'S OFFICE AT 15870 OLDEN STREET, SYLMAR, CALIFORNIA, CONTACT JEFF PATRICK @ (818) 362-4591  
 DESERT MECHANICAL, INC., INTENDS TO CONDUCT ITSELF IN GOOD FAITH WITH SMALL BUSINESS ENTERPRISES REGARDING PARTICIPATION ON THIS PROJECT  
 NOTE: ASSISTANCE WILL BE GIVEN IN OBTAINING BONDS, LINES OF CREDIT AND/OR INSURANCE AS WELL AS NECESSARY EQUIPMENT, SUPPLIES, MATERIALS OR RELATED ASSISTANCE OR SERVICES

An Equal Opportunity Employer



# California Sub-Bid Request Ads

## SKANSKA

**Construct 4 Lane Highway on Route 15 - 76**  
**Caltrans Contract No.: 11-257154**  
**District 11 on Route 15, 76**  
**DBE Goal: 10%**  
**Bid Date: June 19, 2014 - 2:00PM**

Skanska is interested in soliciting in Good Faith all subcontractors as well as certified DBE companies for this project. All interested subcontractors, please indicate all lower tier DBE participation offered on your quotation as it will be evaluated with your price. Please call if we can assist you in obtaining bonding, lines of credit, insurance, necessary equipment, materials and/or supplies. Skanska will also review breaking out scope packages and adjusting schedules to help permit maximum participation.

Plans and Specifications are available for view at our main office in Riverside or on the Caltrans website: [http://www.dot.ca.gov/hq/esc/oe/weekly\\_ads/index.php](http://www.dot.ca.gov/hq/esc/oe/weekly_ads/index.php)

**Quotes requested for contractors, suppliers and service providers include, but are not limited to:**

LEAD COMPLIANCE PLAN, PROGRESS SCHEDULE (CPM), CONSTRUCTION AREA SIGNS, TRAFFIC CONTROL SYSTEM, TYPE II & III BARRICADE, TEMP STRIPING, PAVEMENT MARKING (PAINT) & MARKERS, TRAFFIC PLASTIC DRUM, PORTABLE CHANGEABLE MESSAGE SIGN, TEMP RAILING (TYPE K), TEMP CRASH CUSHION MODULE, TEMP ALTERNATIVE CRASH CUSHION SYSTEM, PREPARE SWPPP, RAIN EVENT ACTION PLAN, STORM WATER SAMPLING AND ANALYSIS DAY, STORM WATER ANNUAL REPORT, TEMP EROSION CONTROL, TEMP CONSTRUCTION ENTRANCE, STREET SWEEPING, TEMP CONCRETE WASH-OUT, TEMP FENCE (TYPE ESA), TEMP ARROYO TOAD FENCE, TREATED WOOD WASTE, PRE-MANUFACTURED BAT HOUSE, REMOVE OR ABANDON EXISTING FACILITIES, MAINTAIN ARROYO TOAD FENCE, RESET MAILBOX, RELOCATE OR ADJUST UTILITIES, MODIFY INLET, MODIFY SEWER MANHOLE, COLD PLANE ASPHALT CONCRETE PAVEMENT, REMOVE CONCRETE, CAP RISER, BRIDGE REMOVAL, CLEARING AND GRUBBING, DEVELOP WATER SUPPLY, ROADWAY EXCAVATION, ROCK EXCAVATION (CONTROLLED BLASTING), STRUCTURE EXCAVATION, STRUCTURE BACKFILL, DITCH EXCAVATION, IMPORTED BORROW, SUBGRADE ENHANCEMENT GEOTEXTILE CLASS B2, LANDSCAPING & IRRIGATION, EROSION CONTROL, CLASS 2 AGGREGATE BASE, ASPHALTIC EMULSION (FOG SEAL COAT), SLURRY SEAL, HOT MIX ASPHALT-SUPERPAVE, PAVING ASPHALT (BINDER, GEO PAVEMENT INTERLAYER), GEOSYNTHETIC PAVEMENT INTERLAYER (PAVING FABRIC), DATA CORE, PLACE HOT MIX ASPHALT DIKE, PLACE HMA (MISCELLANEOUS AREA), TACK COAT, CONTINUOUSLY REINFORCED CONCRETE PAVEMENT, TEMP HAUL BRIDGE, PERMANENT STEEL CASING, CIDH CONCRETE PILING, CIDH CONCRETE PILING (ROCK SOCKET), STEEL SHEET PILING, PRESTRESSING CAST-IN-PLACE CONCRETE, STRUCTURAL CONCRETE, MINOR CONCRETE (MINOR STRUCTURE), CONCRETE SLOPE ANCHOR, FURNISH PRECAST PRESTRESSED CONC BULB-T GIRDER, ERECT PRECAST PRESTRESSED CONCRETE GIRDER, JOINT SEAL, BAR REINFORCING STEEL, FURNISH AND/OR INSTALL ALL SIGNS, TIMBER RETAINING WALL, ROCK STAIN, ALTERNATIVE PIPE CULVERT, TEMP CULVERT, SLOTTED PLASTIC PIPE, REINFORCED CONCRETE PIPE, BITUMINOUS COATED CORR STEEL PIPE, PERFORATED PLASTIC PIPE UNDERDRAIN, GRATED LINE DRAIN, ROCK SLOPE PROTECTION, CONCRETE (SLOPE PROTECTION), CONCRETE (DITCH LINING), SLOPE PAVING (CONCRETE), GABION, ROCK SLOPE PROTECTION FABRIC, MINOR CONCRETE (GUTTER), DETECTABLE WARNING SURFACE, MINOR CONCRETE (MISC CONST), PARKING BUMPER (PRECAST CONCRETE), MISC IRON AND STEEL, PVC SEWER PIPE, RECONNECT EXISTING SEWER LATERAL, TEMP SEWER BYPASS, STEEL CASING (SEWER), PRECAST PVC LINED CONCRETE MANHOLE, PRECAST CONCRETE MANHOLE, FIRE HYDRANT ASSEMBLY, AUTOMATIC AIR RELEASE AND VACUUM RELIEF VALVE, BLOW OFF ASSEMBLY, DUCTILE IRON WATER PIPE, STEEL CEM-MORTAR LINED AND COATED WATER PIPE, STEEL CEM-MORTAR LINED AND COATED WATER PIPE, STEEL CEM-MORTAR LINED AND COATED WATER PIPE, STEEL CASING (WATER), TRENCHLESS CASING INSTALLATION, FENCEING, TUBULAR STEEL GATE, WILDLIFE PASSAGE WAY (TYPE M), TUBULAR HANDRAILING, CABLE RAILING, TRANSITION RAILING, ALTERNATIVE IN-LINE TERMINAL SYSTEM, CRASH CUSHION (REACT 9CBB), CONCRETE BARRIER - TYPE 60, CONCRETE BARRIER (TYPE 736), STRIPING & MARKINGS, ELECTRICAL, SIGNAL AND LIGHTING, TRAFFIC MONITORING STATION, CLOSED CIRCUIT TELEVISION SYSTEM.

Subcontracting Requirements: Skanska's insurance requirements are Commercial General Liability (GL): \$1M ea. occ., \$1M personal injury, \$2M products & completed operations agg. and general agg.; \$1M Auto Liability; \$5M Excess/Umbrella and \$1M Workers Comp. Endorsements and waivers required are the Additional Insured End., Primary Wording End., and a Waiver of Subrogation (GL & WC). Other insurance requirements may be necessary per scope. Subcontractors may be required to furnish performance and payment bonds in the full amount of their subcontract by an admitted surety and subject to approval by Skanska. Skanska will pay bond premium up to 1%. Quotations must be valid for the same duration as specified by the Owner for contract award. Conditions or exceptions in Subcontractor's quote are expressly rejected unless accepted in writing. Skanska is signatory to the Operating Engineers, Laborers, Cement Masons, Carpenters Unions and Teamsters. Subcontractors must provide weekly, one original and one copy of all certified payrolls, including non-performance and fringe benefit statements if required by law or by the Prime Contract. Subcontractor scope (including any conditions or exceptions) is required 24 hours prior to bid deadline to allow proper evaluation.

**Skanska is an Equal Opportunity Employer**

**Skanska Estimating Dept: 1995 Agua Mansa Rd, Riverside, CA 92509**

**Ph: (951) 684-5360, Fax: (951) 788-2449**

**Email: tom.mehas@skanska.com**

Gallagher and Burk, Inc. is soliciting for M/WBEs for the following project:  
**RESURFACING OF PORTIONS OF VARIOUS ROADWAYS IN THE CASTRO VALLEY AREA OF ALAMEDA COUNTY**  
**Specification No. 2254**  
**OWNER: COUNTY OF ALAMEDA - PUBLIC WORKS AGENCY**  
 951 Turner Court, Room 300, Hayward, CA 94545  
**BID DATE: JUNE 11, 2014 @ 2:00 P.M.**

We hereby encourage responsible participation of local Minority/Woman-Owned Business Enterprises, and solicit their subcontractor or materials and/or suppliers quotation for the following types of work including but not limited to:

**ADJUST IRON, CRACK SEALING, ELECTRICAL, TEMPORARY EROSION CONTROL, FABRIC, PAVEMENT MILLING, STRIPING, TRUCKING, WATER TRUCKS, STREET SWEEPING, HOT MIX ASPHALT (TYPE A) MATERIAL.**

100% Performance and Payment Bonds may be required for full amounts of the subcontract price. Surety company will have to be approved by Gallagher and Burk, Inc. Gallagher and Burk, Inc. will pay bond premium up to 2%. Subcontractors must possess current insurance and worker's compensation coverage meeting Gallagher and Burk, Inc.'s requirements. Please call if you need assistance in obtaining bonding, insurance, equipment, materials and/or supplies. Plans and specifications are available for review at our Dublin office.

### Gallagher & Burk, Inc.

344 High Street • Oakland, CA 94601  
 Phone: (510) 261-0466 • FAX (510) 261-0478

**Estimator: Steve Lippis**

Website: [www.desilvagates.com](http://www.desilvagates.com)

**An Equal Opportunity Employer**

Gallagher and Burk, Inc. is soliciting for M/WBEs for the following project:  
**RESURFACING OF PORTIONS OF VARIOUS ROADWAYS IN THE ASHLAND, FAIRMONT TERRACE, AND FAIRVIEW AREAS OF ALAMEDA COUNTY**  
**Specification No. 2255**  
**OWNER: COUNTY OF ALAMEDA - PUBLIC WORKS AGENCY**  
 951 Turner Court, Room 300, Hayward, CA 94545  
**BID DATE: JUNE 11, 2014 @ 2:00 P.M.**

We hereby encourage responsible participation of local Minority/Woman-Owned Business Enterprises, and solicit their subcontractor or materials and/or suppliers quotation for the following types of work including but not limited to:

**ADJUST IRON, COLD PLANE, CONSTRUCTION SITE MANAGEMENT, CRACK SEALING, ELECTRICAL, PAVING FABRIC, STRIPING, SURVEY/STAKING, TRUCKING, STREET SWEEPING, HOT MIX ASPHALT (TYPE A) MATERIAL.**

100% Performance and Payment Bonds may be required for full amounts of the subcontract price. Surety company will have to be approved by Gallagher and Burk, Inc. Gallagher and Burk, Inc. will pay bond premium up to 2%. Subcontractors must possess current insurance and worker's compensation coverage meeting Gallagher and Burk, Inc.'s requirements. Please call if you need assistance in obtaining bonding, insurance, equipment, materials and/or supplies. Plans and specifications are available for review at our Dublin office.

### Gallagher & Burk, Inc.

344 High Street • Oakland, CA 94601  
 Phone: (510) 261-0466 • FAX (510) 261-0478

**Estimator: Alan McKean**

Website: [www.desilvagates.com](http://www.desilvagates.com)

**An Equal Opportunity Employer**

Gallagher and Burk, Inc. is soliciting for LBABEs, LIABEs, SBE/SVBES for the following project:  
**CONSTRUCTION OF RON COWAN PARKWAY BIKE PATH EXTENSION OAKLAND INTERNATIONAL AIRPORT OAKLAND**  
**OWNER: PORT OF OAKLAND - 530 Water Street, Oakland, CA**  
**BID DATE: June 9, 2014 @ 2:00 P.M.**

We hereby encourage responsible participation of LBABEs, LIABEs, SBE/SVBES, and solicit their subcontractor or materials and/or suppliers quotation for the following types of work including but not limited to:

**Site Demolition, Clearing and Grubbing, Chain Link Fence, Adjust Utility Structures to Grade, Landscaping, Class 2 Aggregate Base, Asphalt Concrete Pavement, Asphalt Concrete Dike, Roadside Signs, Storm Drainage Piping, Thermoplastic Traffic Striping and Pavement Markings, Channelizer Posts, Traffic Signal and Street Light Modifications, Minor Concrete, Trucking, and Street Sweeping.**

100% Performance and Payment Bonds may be required for full amounts of the subcontract price. Surety company will have to be approved by Gallagher and Burk, Inc. Gallagher and Burk, Inc. will pay bond premium up to 2%. Subcontractors must possess current insurance and worker's compensation coverage meeting Gallagher and Burk, Inc.'s requirements. Please call if you need assistance in obtaining bonding, insurance, equipment, materials and/or supplies. Plans and specifications are available for review at our Dublin office.

### Gallagher & Burk, Inc.

344 High Street • Oakland, CA 94601  
 Phone: (510) 261-0466 • FAX (510) 261-0478

**Estimator: Alan McKean**

Website: [www.desilvagates.com](http://www.desilvagates.com)

**An Equal Opportunity Employer**

**WE ARE REQUESTING QUOTATIONS FROM ALL QUALIFIED LBE (small/mico)/MBE/DBE/WBE/OBE/SBE/DVBE SUBCONTRACTORS AND MATERIAL SUPPLIERS FOR THE FOLLOWING PROJECT:**  
**Pier 35 Building & Roof Repair Project - Contract No. 2765**  
**BID DATE & TIME:**  
**Due on or prior to 1:30 PM, June 25, 2014**

Above project consists of the modernization and repair of two existing elevators, removal of existing roofing materials, hazardous material abatement, paint, sheet metal flashing and trim, plumbing, selective dry rot repair to the roof deck, refurbishment of existing historic features including windows and provision for tenant protection. Bids shall be made in accordance with the prevailing wages for the work in San Francisco County. **LBE (small/mico)/MBE/DBE/WBE/OBE/SBE/DVBE Goals.**

**(The Specifications and Plans will be available in our office 8:30AM - 5PM or at ARC Northern California - Bid Services - 945 Bryant Street, San Francisco, CA 94103. Contact Priyantha De Pinto: 415-537-2235 Fax: 415-348-0684, email: sf@e-arc.com).**

### Transworld Construction Inc.

1178 Folsom Street • San Francisco, CA 94103  
 Phone: (415) 626-5500 • FAX: (415) 863-3578  
 Contact: Paul Hess at ext. 112

**WE ARE AN EQUAL OPPORTUNITY EMPLOYER**

SHIMMICK | FCC | IMPREGILO JV

## MEET & GREET OUTREACH EVENT

Shimmick Construction Company, Inc. /FCC Construction S.A./Impregilo S.p.A., Joint Venture (SFI) is an equal opportunity Prime Contractor seeking quotes from subcontractors/suppliers for the following project:

### GERALD DESMOND BRIDGE REPLACEMENT PROJECT

Construction of a new 2000 ft cable stay main span bridge with approximately 3 miles of approach bridge structures for the Port of Long Beach. For more information about subcontracting please go to: [www.sfigdb.com](http://www.sfigdb.com)

Shimmick, FCC, Impregilo a JV will be hosting an outreach event to seek qualified sub-contractors/suppliers and encourage participation of certified, Underutilized Disadvantaged Business Enterprises (UDBE) to help attain the project goal of 11% UDBE in the following scopes:

**\$6.5M Lightweight Cellular Concrete Embankment Bid package – RFP52:** The scope of work for the Installation of Lightweight Cellular Concrete Embankments for the Gerald Desmond Bridge Replacement shall include the following: The cost of all necessary labor, material, equipment, supplies, supervision, safety, and quality control required to complete the work in accordance with the contract documents and as noted below. Each Contract scope shall be bid and accepted as a complete package. All material and equipment must be approved by SFI prior to purchase and installation.

The scope of this bid package is comprised of: Furnish and installation of lightweight cellular concrete embankment fills to the lines, grades, and slopes shown in the project plans and specifications. Scope also includes coordinating with project design to answer technical and constructability related inquiries. Subcontractor shall bid all items based on the specifications and drawings provided. The unit prices provided shall be applied to agreed upon quantities when substantial drawings become available. Final quantities will be measured based on approved plans and adjusted via change order(s).

\*Bid Proposal Due Date: June 19th 2014

SHIMMICK | FCC | IMPREGILO JV



This event will be held on:

**June 5th, 2014  
10:00 AM - 11:00 AM**

at:

**280 Pier T Lane /SFI Office Trailer  
Long Beach, CA 90802**



\*Parking is Free

Please email Nancy @ [nancy.nguyen@sfigdb.com](mailto:nancy.nguyen@sfigdb.com) to register for the event and receive full bid package(s) prior to the event.

SFI, A Joint Venture is an Equal Opportunity Employer and actively requests bids from Underutilized Disadvantaged Business Enterprises (UDBE). The Project has an 11% UDBE goal. Items of work may be broken down into economically feasible packages to encourage participation. SFI, A Joint Venture intends to conduct itself in good faith with all firms for participation on this project. 100% Performance and Payment bonds with a surety company subject to approval of SFI, A Joint Venture. are required of subcontractors for this project. SFI, A Joint Venture will pay bond premium up to 1.0%. Subcontractors will be required to abide by terms and conditions of the Project Labor Agreement (PLA) and to execute an agreement utilizing the latest SFI, A Joint Venture Standard Long Form Subcontract incorporating prime contract terms and conditions, including payment provisions.

## SUB-BID REQUEST AD

### SKANSKA

**Route 10/57 Separation Project  
Caltrans Contract No.: 07-295004  
District 07 on Route 10  
DBE Goal: 7%  
Bid Date: June 19, 2014 – 2:00PM**

Skanska is interested in soliciting in Good Faith all subcontractors as well as certified DBE companies for this project. All interested subcontractors, please indicate all lower tier DBE participation offered on your quotation as it will be evaluated with your price. Please call if we can assist you in obtaining bonding, lines of credit, insurance, necessary equipment, materials and/or supplies. Skanska will also review breaking out scope packages and adjusting schedules to help permit maximum participation.

Plans and Specifications are available for view at our main office in Riverside or on the Caltrans website: [http://www.dot.ca.gov/hq/esc/oe/weekly\\_ads/index.php](http://www.dot.ca.gov/hq/esc/oe/weekly_ads/index.php)

**Quotes requested for contractors, suppliers and service providers include, but are not limited to:** Trucking, Street Sweeping, Equipment Rental, Lead Compliance Plan, Progress Schedule (Critical Path Method), Time-Related Overhead (WDAY), Construction Area Signs, Traffic Control System, Channelizer (Surface Mounted), Temporary Railing (Type K), Temporary Crash Cushion Module, Job Site Management, Prepare Water pollution Control, Temporary Drainage Inlet Protection, Street Sweeping, Temporary Concrete Washout, Remove Yellow Thermoplastic Traffic Stripe, Remove Irrigation Facility, Street Sweeping, Temporary Concrete Washout, Treat Wood Waste, Remove Irrigation Facility, Remove Yellow Thermoplastic Traffic Stripe (Hazardous Waste), Remove Pavement Marking, Remove Asphalt Concrete Pavement (SQFT), Remove Asphalt Concrete Dike, Relocate Road Sign (Wood Post), Cold Plane AC Pavement, Remove Crash Cushion, Riser Sprinkler Assembly, Replace Base, Asphalt Rubber Stress Absorbing Membrane Interlayer (Sami-R), Crack Treatment, Hot Mix Asphalt, Superpave (Type A), Rubberized Hot Mix Asphalt, Superpave (gap Graded), Data Core, Place Hot Mix Asphalt Dike (Type F), Tack Coat, Drill And Bond (Dowel Bar), Furnish Laminated Panel Sign (Relocate Roadside Sign, Adjust Pull Box, (1?-Type A), Furnish Single Sheet Aluminum Sign, Furnish Single Sheet Aluminum Sign, Roadside Sign- Two Post, Install Sign, Install Roadside Sign Panel On Existing Post, Misc. Iron & Steel, Transition Railing, End Cap (Type C), End Anchor Assembly (type SFT), Alternative In-Line Terminal System, Alternative Flared Terminal System, Crash Cushion SCI 100 GM, Crash Cushion Compressor, Thermoplastic Traffic Stripe, Paint Traffic Stripe, Pavement Marker (Non-Reflective, Retroreflective), Maintaining Existing Traffic Management System Elements During Construction, Temporary Microwave Vehicle Detection System, Modify Traffic Monitoring Station, Modify Ramp Metering System, Modify Automatic Vehicle Classification Station, Modify Signal & Lighting, Modify Signal, Mobilization.

Subcontracting Requirements: Skanska's insurance requirements are Commercial General Liability (GL): \$1M ea. occ., \$1M personal injury, \$2M products & completed operations agg. and general agg.; \$1M Auto Liability; \$5M Excess/Umbrella and \$1M Workers Comp. Endorsements and waivers required are the Additional Insured End., Primary Wording End., and a Waiver of Subrogation (GL & WC). Other insurance requirements may be necessary per scope. Subcontractors may be required to furnish performance and payment bonds in the full amount of their subcontract by an admitted surety and subject to approval by Skanska. Skanska will pay bond premium up to 1%. Quotations must be valid for the same duration as specified by the Owner for contract award. Conditions or exceptions in Subcontractor's quote are expressly rejected unless accepted in writing. Skanska is signatory to the Operating Engineers, Laborers, Cement Masons, Carpenters Unions and Teamsters. Subcontractors must provide weekly, one original and one copy of all certified payrolls, including non-performance and fringe benefit statements if required by law or by the Prime Contract. Subcontractor scope (including any conditions or exceptions) is required 24 hours prior to bid deadline to allow proper evaluation.

**Skanska is an Equal Opportunity Employer**

Skanska Estimating Dept: 1995 Agua Mansa Rd, Riverside, CA 92509 – Ph: (951) 684-5360, Fax: (951) 788-2449

Email: [hamied.kazerooni@skanska.com](mailto:hamied.kazerooni@skanska.com)

## What Housing Recovery?

Continued from page 2

Of course, many banks no longer own the loans they made. They pooled large numbers of subprime loans into private securities and sold them. The companies that service these securities generally refuse to countenance the idea of "principal reduction." Yes, some homeowners have been able to persuade lenders to reset their loans, but most get the cold shoulder or a bureaucratic runaround.

In some cities, though, nonprofit lenders, like New Jersey Community Capital and Hogar Hispano, have stepped into the void, raising capital and purchasing troubled loans in order to modify them on affordable terms. But too few loan holders have been willing to sell to these homeowner-friendly groups.

In 2012, some of the biggest banks signed a settlement agreement with 49 state attorneys general to modify mortgages, but many of them continue to heap abuse on their customers, and sufficient relief has not reached trapped homeowners.

The Obama administration created several initiatives to help troubled borrowers, but these programs do not require banks to reset loans as a condition of getting federal funds. The government's Home Affordable Modification Program has helped only one-quarter of the four million homeowners it was supposed to reach.

Worse, the federal government has actually been an obstacle to reform. The Federal Housing Finance Agency, which oversees Fannie Mae and Freddie Mac, has refused to allow these two mortgage giants to reduce the principal on underwater mortgages that they own or guarantee. All it would take is for President Obama's new appointee as F.H.F.A. director, former Representative Melvin Watt, to change the policy, an action that does not require congressional approval. He should do so immediately.

Meanwhile, faced with this predicament, some municipalities have been trying to take matters into their own hands. Late last year, Richmond, Calif., was the first city to develop a plan to use its power of eminent domain to buy underwater mortgages at their current market value and to refinance them, but many other localities are likely to follow. A number of responsible for-profit and nonprofit lenders stand ready to do business with them so that local governments don't have to use tax dollars to purchase these loans.

Dealing with this problem on a city-by-city basis may not be the most efficient way to confront a national crisis, but in the face of Wall Street intransigence and federal indifference, cities have had to find their own way to restore the lost wealth of their constituents.

**Peter Dreier is a professor of politics at Occidental College.**

Source: © 2014 The New York Times Company



## FIND

Subcontractors, Vendors,  
and Suppliers

## REACH

Diverse Audiences of Various  
Ethnicity, Race, & Gender

## ADVERTISE

Sub-Bid Request Ad

SBE Newspaper boasts a weekly readership of **75,000**  
SBE Delivers competent, competitive, and certified  
subcontractors, vendors, and suppliers



# The 10th Annual Hill Physicians Asian Heritage Street Celebration

The 10th Annual Hill Physicians Asian Heritage Street Celebration took place Saturday, May 17th at San Francisco's Civic Center. The Hill Physicians Asian Heritage Street Celebration is a showcase of all Asian and Pacific Islander cultures.

Hill Physicians AHSC is the largest gathering of Asians in the country and is held every third Saturday of May in San Francisco, California. It is produced by the AsianWeek Foundation.



Hundreds of people performed tai chi at Civic Center plaza. Photo by Allen Sun Lin



Celebrating National Hepatitis Day at the Hill Physicians Asian Heritage Street Celebration. Photo by Michael Jeong



Hundreds stopped by the Hill Physicians booth for free health screenings. Photo by Jong Arcega



Paul Robeson and Chinese opera singer Mei Lanfang (far right), London, 1930's

Paul Leroy Robeson (April 9, 1898 – January 23, 1976) was an African-American singer and actor who became involved with the Civil Rights Movement. At Rutgers University, he was an outstanding football player, then had an international career in singing, as well as acting in theater and movies. He became politically involved in response to the Spanish Civil War, fascism, and social injustices. His advocacy of anti-imperialism, affiliation with communism, and criticism of the United States government caused him to be blacklisted during

the McCarthy era.

Mei Lanfang (October 22, 1894 – August 8, 1961) was one of the most famous Peking opera artists in modern history, exclusively known for his qingyi roles, a type of dan role. Méi Lánfāng is his stage name, and in Chinese it is generally considered a feminine name. His real name was Méi Lán

YOU ARE CORDIALLY INVITED TO CELEBRATE

## 10 Years of the AsianWeek Foundation

WEDNESDAY | JUNE 4, 2014  
6:00 PM – 8:00 PM  
TRANSAMERICA PYRAMID  
600 MONTGOMERY ST., 48TH FLOOR  
SAN FRANCISCO

AFTER TEN YEARS OF ORGANIZING SOME OF THE LARGEST AND MOST DIVERSE PROJECTS IN THE COMMUNITY, PLEASE JOIN US AT A RECEPTION BENEFITTING OUR NEWEST INITIATIVE

FOR MORE INFO CONTACT SUSAN MA  
415.373.0896 | SMA@AWFOUNDATION.COM

\$1,250 – DIVINE LOTUS  
\$500 – LUCKY BAMBOO  
\$250 – BLOSSOMING PEONY  
\$50 – GRASSHOPPER

SAN FRANCISCO'S FIRST  
**Asian Community Garden**



# West Coast Rail Conference

Continued from page 1

ground for the development of our national high speed rail plan.

Our plan calls for a national system of HSR Express lines connecting cities and states into an integrated system. Our plan sets high standards for interoperable state-of-the-art dedicated track, advanced control systems, elegant multi-modal train stations, and top-of-the-line 220 mph trains connecting major cities together. Our plan calls for a support network of 110 mph trains connecting smaller cities and towns together with the high speed system.

The national high speed rail system forms the backbone of a complete sustainable transportation system for America. The other components of this system include connecting regional and commuter rail, light rail, streetcars, trams, electric buses, and bicycles.

Source: US High Speed Rail Association

"Individuals that lie, exaggerate and falsify injuries with the intent to bilk the workers' compensation system are stealing from every Californian,"

"New high-speed trains will link 80 percent of Americans within 25 years, at a cost of about \$500 billion" - 8/12/10

"The greater danger for most of us lies not in setting our aim too high and falling short; but in setting our aim too low, and achieving our mark."

-Michelangelo

"Make no small plans. They have no magic to stir humanity's blood and probably themselves will not be realized. Make big plans; aim high in hope and work, remembering that a noble, logical plan once recorded will never die, but long after we are gone will be a living thing, asserting itself with ever-growing insistency."

-Daniel Burnham

## Conference Agenda June 2-4, San Francisco Sponsored by Autodesk

### June 2

8 am - 8:30 Welcome Coffee & Registration

8:30 - 10:00 **Bringing High Speed Rail to America**

Opening session with leading advocates for high speed rail. Hear about the benefits, opportunities, and challenges of a major new infrastructure project for America. Learn about high speed rail successes from around the world and how they can be applied to America. Hear about progress being made, status of the program, and what's coming next.

- Andy Kunz, USHSR
- Rod Diridon, Mineta Transportation Institute
- Fiona Ma, California Assembly
- other speakers TBA

10:00 - 10:30 **Transbay Transit Center - Grand Central Station of the West**



Special presentation from Maria Ayerdi Kaplan, Executive Director, Transbay Joint Powers Authority.

10:30 - 11:00 Coffee, Refreshments, & Networking

**Autodesk Welcome From Lisa Campbell**



Special welcome from Lisa Campbell, Vice President, Customer Strategy & Marketing for Autodesk

11:00 - 12:30 **High Speed Rail Around the World**

The global high speed rail network will be discussed by representatives from different continents. Lessons learned and best practices in high speed rail from experts from Europe and Asia.

- Stephen Robillard, Siemens
- Francisco Fernandez-Lafuente, SENER
- Nazih Haddad, The Louis Berger Group
- John Barna, ANRAB Associates
- other speakers TBA

### June 3

8 am - 8:30 Welcome Coffee & Registration

8:30 - 10:00 **A New Vision for Transportation in America**

Hear about the coming paradigm shift in transportation from leading national and state advocates for HSR. Learn about the opportunities for advancing jobs and economic development across America while delivering new fast and efficient mobility options.

- Senator Cathleen Galgiani
- Assemblymember Bonnie Lowenthal
- Mayor James Ledford, Jr., City of Palmdale
- other speakers TBA

10:00 - 10:30 Coffee, Refreshments, & Networking

10:30 - 11:30 **HSR in America Update**

Hear the latest on the national HSR program, schedules, and funding. Get project updates from California, Florida, Texas, Illinois, New York, NEC, the Southwest, and more.

- Daniel Krause, US High Speed Rail Association
- Brad Perkins, Cascadia High Speed Rail
- Richard Arena, APT
- other speakers TBA

11:30 - 1:00 **California Statewide Rail Modernization**

State business and political leaders discuss the many aspects of building the nation's first high speed rail project and the improvements to rail systems statewide.

- Chad Edison, CA State Transportation Agency
- Michael DePallo, Metrolink
- Ben Tripousis, CA HSR Authority
- Dan Leavitt, San Joaquin Regional Rail Commission
- other speakers TBA

1:00 - 2:00 **Networking Lunch**

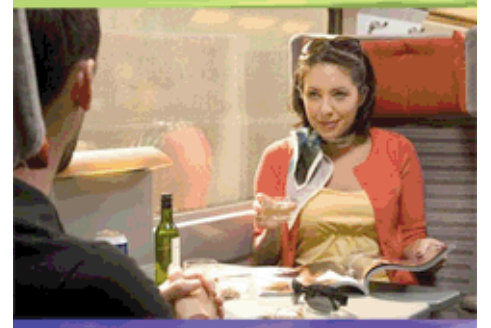
### June 4

9 am - 1:00 pm **Transportation Tours**

2 Tours are offered, included with your registration:

**TOUR 1 - TRANSBAY TRANSIT CENTER**  
**TOUR 2 - BART CONTROL CENTER**

Tour information and registration will be available in the next few days



The Conference takes place at the Autodesk Gallery, One Market Street, downtown San Francisco.

Visit link below to see the FULL Agenda  
[www.usshr.com/sfprogram2014.html](http://www.usshr.com/sfprogram2014.html)



# California Sub-Bid Request Ads

RGW Construction Inc. is seeking all qualified DBE (Disadvantaged Business Enterprises) for the following project:

**State Highway in the City and County of San Francisco on Route 101 and Route 280 at Route 101/280 Separation**

**Contract No. 04-1A5514 Federal Aid Project ACNHP-X075(042)E**

**Engineer Estimate: 6,400,000 - 330 Working Days**

**Goal: DBE 8%**

**Bids: June 10, 2014 @ 2:00 PM**

Requesting Sub-quotes for (including but not limited to) Construction Area Signs, Traffic Control, Demolition/Bridge Removal, Structural Concrete, Joint Seal, Reinforcing Steel, Signs Roadside, MBGR, Concrete Barrier, Thermoplastic and Painted Traffic Stripe & Marking, Pavement Marking, Signal and Lighting, SWPPP Planning, Water Truck, Sweeper & Trucker.

**Scope of Work:** Replace Barrier Railings

RGW is willing to breakout any portion of work to encourage DBE participation. Contact us for a specific item list.

Plans and Specs are available to view and copy at our office or the Caltrans website [www.dot.ca.gov/hq/esc/oe/](http://www.dot.ca.gov/hq/esc/oe/). Contact David Aboujoudom 925-606-2400 [david@rgwconstruction.com](mailto:david@rgwconstruction.com) for any questions, including bonding, lines of credit, or insurance or equipment or material suppliers. Subcontractors should be prepared to submit payment and performance bonds equal to 100% of their quotation. For bonding and other assistance, please call.

## RGW Construction, Inc.

Contractors License A/B 591940

550 Greenville Road • Livermore, CA 94550 • Phone: 925-606-2400 • Fax: 925-961-1925

An Equal Opportunity Employer

RGW Construction Inc. is seeking all qualified DBE (Disadvantaged Business Enterprises) for the following project:

**State Highway in Contra Costa County at Various Locations on Rte 4 West of Alhambra Avenue to East of Loveridge Rte D and on Rte 242 From Rte 680 to Rte 4**

**Contract No. 04-152724 Federal Aid Project CML-6204(114)**

**Engineer Estimate: 15,500,000 - 250 Working Days**

**Goal: DBE 14%**

**Bids: June 17, 2014 @ 2:00 PM**

Requesting Sub-quotes for (including but not limited to): Fabric and Oils, Electrical Material, Construction Area Signs, Traffic Control, Cold Plane, Demolition/Bridge Removal, Clear & Grub, Structure Excavation/backfill, Erosion Control, Irrigation, Aggregate Base, Asphalt Paving, Grinding, Structural Concrete, Reinforcing Steel, Sign Structure, Signs Roadside, Rock Slope Protection, MBGR, Metal Railing, Concrete Barrier, Thermoplastic and Painted Traffic Stripe & Marking, Pavement Marking, Signal and Lighting, Message Signs, Lighting & Sign Illumination, Ramp Metering System, SWPPP Planning, Water Truck, Sweeper, Trucker and Storm Drain (Underground).

**Scope of Work:** Install ramp metering & TOS elements.

RGW is willing to breakout any portion of work to encourage DBE participation. Contact us for a specific item list.

Plans and Specs are available to view and copy at our office or the Caltrans website [www.dot.ca.gov/hq/esc/oe/](http://www.dot.ca.gov/hq/esc/oe/). Contact David Aboujoudom 925-606-2400 [david@rgwconstruction.com](mailto:david@rgwconstruction.com) for any questions, including bonding, lines of credit, or insurance or equipment or material suppliers. Subcontractors should be prepared to submit payment and performance bonds equal to 100% of their quotation. For bonding and other assistance, please call.

## RGW Construction, Inc.

Contractors License A/B 591940

550 Greenville Road • Livermore, CA 94550 • Phone: 925-606-2400 • Fax: 925-961-1925

An Equal Opportunity Employer

Sub-Bids Requested from qualified MBE/WBE/DBE Subcontractors and Suppliers For:

**ALTA VISTA TANK NO. 2 PROJECT**

**Owner: Montara Water and Sanitary District • Location: Montara, CA**

**Bid Date: June 4, 2014 @ 2:00 P.M.**

## J.F. Shea Construction, Inc.

667 Brea Canyon Road, Suite 30 • Walnut, CA 91788-0489 • Phone: (909) 595-4397, Fax: (909) 444-4268

Contact: [Lori Olivas, lori.olivas@jfshea.com](mailto:Lori.Olivas@jfshea.com)

J.F. Shea Construction, Inc. is soliciting your participation in the preparation of this bid. We are particularly interested in bids from subcontractors/suppliers for the following work items:

Demolition, Geomembrane, Rip-Rap, Chain Link Fencing, Landscaping, Aggregates, Precast Concrete Structures, Horizontal Directional Drilling, Prestressed Concrete Circular Water Tank, Monitoring Wells, Ready-Mix Concrete, Reinforcing Steel, Shotcrete, Grouting, Below Grade Vapor Barrier, Painting and Coatings, Equipment, Electrical and Instrumentation

Plans and Specifications are available from: Jessica Adams, PE, of SRT Consultants, 792 Bay Street, San Francisco, CA 94109, Phone: (415) 776-5800, ext. 305, Email: [jka@srtconsultants.com](mailto:jka@srtconsultants.com) for a fee of \$75. Digital copies may be downloaded from [www.eBidboard.com](http://www.eBidboard.com). Plans may also be viewed at the Dodge Plan Rooms or at our Walnut Office.

J.F. Shea Construction, Inc. is an equal opportunity employer and intends to negotiate in good faith with interested MBE/WBE/DBE firms and intends to utilize the lowest responsive bidder. J.F. Shea expects potential subcontractors to be bondable. J.F. Shea will pay for up to 1% for subcontractor bond costs. Subcontractors and Suppliers are expected to bid per plans and specifications, including requirements for warranties. Standard manufacturer's warranties, if not in conformance with owner's specifications, will not be accepted.

Pacific States Environmental Contractors, Inc. is soliciting for all DISADVANTAGED BUSINEES ENTERPRISES (DBE) and MINORITY BUSINESS ENTERPRISE (MBE) AND WOMEN'S BUSINESS ENTERPRISE (WBE), and solicits them as a SUB-CONSULTANT or subcontractor or materials and/or suppliers and trucking quotations.

**Point Pinole Regional Shoreline, Breuner Marsh Restoration and Public Access Improvement Project – Phase 1 Grading Goodrick Ave., Richmond, CA**

**Owner: EAST BAY REGIONAL PARK DISTRICT, 2950 PERALTA OAKS COURT, OAKLAND, CA 94605**

**BID DATE: June 2, 2014 @ 2:00 PM**

We hereby encourage responsible participation of all (DBE) Enterprises and solicit their subcontractor or material quotation for the following types of work including but not limited to:

LANDSCAPE, HYDROSEED, SURVEY

100% Performance and Payment Bonds may be required for full amounts of the subcontract price. Surety Company will have to be approved by Pacific States Environmental Contractors, Inc. Pacific States Environmental Contractors, Inc. will pay bond premium up to 2%. Subcontractors must possess current insurance and worker's compensation coverage meeting Pacific States Environmental Contractors, Inc.'s requirements. Please call if you need assistance in obtaining bonding, insurance, equipment, materials and/or supplies. Plans and specifications are available for review at our Dublin office and on file in the office of said District.

## Pacific States Environmental Contractors, Inc.

CAL LIC. NO. 723241

11555 Dublin Boulevard • Dublin, CA 94568-2909

Phone: (925) 803-4333 • FAX: (925) 803-4334

ESTIMATOR: Keith Donahue

EMAIL: [kdonahue@pacificstates.net](mailto:kdonahue@pacificstates.net)

An Equal Opportunity Employer

# Maya Angelou

Continued from page 1

time that she also began her work as a pro-Castro and anti-apartheid activist.

Best known for penning *I Know Why the Caged Bird Sings*, the first volume of a seven-part autobiography, Angelou also wrote three books of essays and multiple poetry compilations.

She wrote, directed and acted in a number of plays, television shows and movies—most notably making history as the first Black female to direct a major motion picture with 1998's *Down in the Delta*. Her screenplay for Georgia, Georgia was also the first original script to be produced by a Black woman.

Angelou was a Pulitzer, Emmy and Tony award nominee, and a three-time Grammy winner.

In 1993, Angelou recited her poem "On the Pulse of Morning" at President Bill Clinton's inauguration, becoming the first poet to read at an inauguration since Robert Frost at John F. Kennedy's inauguration in 1961.

She has received more than 50 honorary degrees and was the first to receive the lifetime Reynolds Professorship of American Studies at Wake Forest University, where she taught beginning in 1982.

Dr. Angelou served as a Bennett College Emeriti Trustee. DiversityInc CEO Luke Visconti and COOCarolynn Johnson are also Trustees on the Bennett College Board.

In 2011, President Barack Obama presented Angelou with the Presidential Medal of Freedom.

Angelou was born Marguerite Ann Johnson on April 4, 1928, in St. Louis. She is survived by her only son, Guy Johnson, a poet and novelist.

Source: <http://www.diversityinc.com>

In honor of Angelou's death, celebrate her life and remember her words, which can often inspire as much as they enlighten.

Here are her 10 best quotes

1. "Courage is the most important of all the virtues because without courage, you can't practice any other virtue consistently."
2. "I've learned that people will forget what you said, people will forget what you did, but people will never forget how you made them feel."
3. "There is no greater agony than bearing an untold story inside you."
4. "You can't use up creativity. The more you use, the more you have."
5. "If I am not good to myself, how can I expect anyone else to be good to me?"
6. "You may not control all the events that happen to you, but you can decide not to be reduced by them."
7. "Love recognizes no barriers. It jumps hurdles, leaps fences, penetrates walls to arrive at its destination full of hope."
8. "I've learned that regardless of your relationship with your parents, you'll miss them when they're gone from your life."
9. "We spend precious hours fearing the inevitable. It would be wise to use that time adoring our families, cherishing our friends and living our lives."
10. "Hate, it has caused a lot of problems in the world, but has not solved one yet."

Source: [sync504.com](http://sync504.com)



# Public Legal Notices



## GOLDEN GATE BRIDGE HIGHWAY & TRANSPORTATION DISTRICT

### NOTICE INVITING BIDS

The Golden Gate Bridge, Highway and Transportation District (District) seeks bids for **Contract No. 2014-BT-12, Santa Rosa Bus Facility Customer Parking Lot Improvements**. Interested Bidders must submit sealed bids to the Office of the Secretary of the District by **Tuesday, June 24, 2014, at 2:00 p.m., PT**, at which time bids will be publicly opened and read.

This public works Project consists of, in general, repaving an existing parking lot and improving the existing drainage at the bus transit building located in Santa Rosa, CA. The demolition work includes removal and disposal of existing asphalt concrete (AC), aggregate base (AB), concrete wheel bumpers, miscellaneous site concrete, pole-mounted ADA signs, an existing irrigation line, and a pipe steel barricade fence. Installation work includes new AB and AC parking lot paving, installation of new wheel bumpers, installation of new steel bollards and ADA signs, installation of a new irrigation line, parking striping, fabrication and installation of a new pipe steel barricade fence, a new concrete walkway, a new addition to the existing concrete bus pad, a new concrete curb, installation of a French drain, drainage swales, a catch basin, and the trenching and installation of a new pipe drain, and all other work items as required to complete the Project titled **Santa Rosa Bus Facility Customer Parking Lot Improvements**, as shown on the Contract Plans and as specified in the Contract Documents.

A non-mandatory pre-bid conference and a job site tour will be held on **Tuesday, June 10, 2014, at 10:00 a.m., PT**, at the Santa Rosa Bus Facility, 3225 Industrial Drive, Santa Rosa, CA 95403.

**This is a Public Works Contract.** Bidders bidding as the prime contractor shall possess a valid **State of California Class A General Engineering Contractor's License**. All subcontractors, if any, shall

be properly licensed by the State of California to perform specialized trades.

The District reserves the right to reject any and all bids or to waive any irregularities or informalities in any bid or in the bidding procedure. No Bidder may withdraw its bid for a period of ninety (90) days after the date of opening bids.

The successful Bidder shall furnish a performance bond and a payment bond in amounts equal to one hundred percent (100%) of the total price of the Contract. Pursuant to Public Contract Code Section 22300, the successful Bidder may submit certain securities in lieu of the District withholding funds from progress payments (retention) during the Project.

**Bidders must meet the contract-specific Small Business Enterprise goal of 8% on this project or demonstrate good faith efforts to do so.**

In accordance with Section 1720 et seq. of the Labor Code, the general prevailing wage rates as established by the Director of the California Department of Industrial Relations will apply to this Contract. The prevailing wage rates established by the California Department of Industrial Relations can be viewed at the District's Engineering Office and are available at <http://www.dir.ca.gov/OPRL/PWD>.

Contract Documents are available for download on the District's web site at <http://www.goldengate.org>. Click on Contract Opportunities, scroll down to Bus Division and look for Contract Number 2014-BT-12. Contract Documents are also available from the Contracts Office, Administration Building, Golden Gate Bridge Toll Plaza, San Francisco, CA 94129-0601, by e-mail at [contractoffice@goldengate.org](mailto:contractoffice@goldengate.org), by telephone at (415) 923-2229, or by facsimile at (415) 923-2357. There is a non-refundable purchase price of fifty dollars (\$50) for a set of hard copies of the Contract Documents. Full-sized Contract Plans will be available for purchase for an additional thirty dollars (\$30).

/s/Lori A. Murray, Procurement Director  
Dated: May 20, 2014  
5/22, 5/29/14

CNS-2623719#  
SMALL BUSINESS EXCHANGE

### Bid Submittal Location:

Contracts Administration  
University of California, Los Angeles  
1060 Veteran Avenue, Suite 125  
Box 951365  
Los Angeles, California 90095-1365  
310-825-7015

### Dates:

Bidding Document Availability: May 29, 2014

Mandatory Pre-Bid Conference/Job Walk:

June 5, 2014  
Beginning promptly at 10:00 a.m.  
(THERE IS NO GRACE PERIOD)

Bid Submittal Deadline: 2:00 p.m., July 8, 2014

License Requirement: C-45 License (Sign)

Prequalification: To be allowed to submit a bid, Bidders must have the minimum experience set forth in the Prequalification Questionnaire contained in the Bidding Documents and posted on the website.

THE REGENTS OF THE UNIVERSITY  
OF CALIFORNIA

## SWINERTON BUILDERS

### ADVERTISEMENT FOR PREQUALIFICATION OF SUBCONTRACTORS

Subject to conditions prescribed by the undersigned, Subcontractors are invited to prequalify to submit bids for the following project:

**UCSC Coastal Biology Building  
University of California, Santa Cruz  
UCSC Project Number 4932 //  
Swinerton Project Number 14085006**

Swinerton Builders Inc. is the CM/Contractor for this University of California, Santa Cruz project, and is seeking to prequalify subcontractors.

### DESCRIPTION OF PROJECT:

#### Coastal Biology Building and Associated Greenhouses:

The main component is the construction of the Coastal Biology Building (CBB) which consists of a new two story, 44,000 square foot lab building designed in accordance with LEED Gold Rating Requirements. A 20,000-gallon seawater storage tank would be constructed outside the CBB lab building. An associated greenhouse complex located on the opposite side of McAllister Way which would include five 600 SF greenhouses, a double greenhouse of 1,200 SF, and one 3,300 SF greenhouse research facility all within a fenced, graded yard.

#### Site Improvements including Roads, Infrastructure, Service Yards and Parking:

The project would also provide the backbone of an improved utility system for the Marine Science Campus (MSC) which would include improvements to the wastewater, water distribution and storm water systems. The development of a new centralized Utility Yard including standby generators and centralized electrical distribution, a new modular building for temporary storage of regulated materials, and a staging area and storage yard. This project also includes circulation infrastructure improvements including conversion of existing roads, an integrated 1.2 mile pedestrian and bicycle trail system, new parking, and general improvements to public access to and around MSC.

The Prequalification Schedule is as follows:

**PREQUALIFICATION PERIOD:**  
**June 2, 2014 to June 13, 2014 at 4:00 PM**

**BID PACKAGES:** The estimated construction costs for the bid packages are as follows:

1. Infrastructure \$16,000,000
2. Landscape and Irrigation \$2,500,000
3. Foundations including piers \$1,200,000
4. Structural Steel \$2,000,000

### PREQUALIFICATION DOCUMENTS:

Potential bidders must become prequalified by Swinerton for a value in excess of the noted amount. Prequalification instructions and documentation are available upon request.

**Please email Darlene McCombs at [dmcombs@swinerton.com](mailto:dmcombs@swinerton.com) for all required information.**

**All prequalification submittals must be received by Swinerton Builders as defined in the Prequalification Coversheet by no later than 4:00PM, June 13, 2014.**

University of California, Santa Cruz and Swinerton Builders encourages the participation of small, disadvantaged, minority-owned, women-owned and service/disabled veteran-owned business enterprises and are committed to promoting a diverse pool of firms for this project. Every effort will be made to ensure that all persons have equal access to contracts and other business opportunities with the University within the limits imposed by law or University policy. Each bidder will require to follow nondiscrimination requirements set forth in the Bidding Documents and to pay prevailing wage at the location of work. The work described in the contract is a public work subject to section 1771 of the California Labor Code.

City and County of San Francisco  
Outreach Advertising  
May - June 2014

### Business Tax Change Ahead

This year San Francisco will phase in a Gross Receipts Tax and reduce the Payroll Expense Tax over the next five years. The Gross Receipts Tax applies to businesses with more than \$1 million in San Francisco gross receipts, exempting most small businesses. Business Registration Fees are also changing for all businesses. The City is providing free seminars to inform businesses about these changes the first Thursday of every month at 3pm in the San Francisco Main Public Library Latino Room, 100 Larkin Street. For more information, go to [www.sfbiztax.org](http://www.sfbiztax.org), call 311 or (415) 701-2311, or contact your tax professional.

### Invitations for Bids

The Port of San Francisco, announces an Invitation for Bids for construction on the **PIER 35 BUILDING & ROOF REPAIR PROJECT**, Contract No. 2765, in San Francisco, CA. The proposed Work will consist of modernization and repair of two existing elevators, removal of existing roofing materials, hazardous material abatement, selective dry rot repair to the roof deck, refurbishment of existing historic features including windows, and provision for tenant protection. Estimate for the base bid is \$2.25M. Bid documents are available for free download by going to the Port of San Francisco Website at <http://www.sfport.com/index.aspx?page=18>, where updates will also be posted.

Special Site access for facility inspection must be requested through the Project Architect. The **LBE subcontracting goal = 19%**, and the project is subject to the requirements of the First Source Hiring Program. The Port reserves the right to reject any or all bids and waive any minor irregularities in any bid.

**TO BE ELIGIBLE TO BID**, the bidding General Contractor (GC) shall possess a valid Class B license from the Contractors State License

Board (CSLB), and shall have verifiable experience as specified under **Document 00100** of the Bid Documents.

**OPTIONAL PREBID CONFERENCE:**  
5/28/14, 10:30 AM, Port of San Francisco office, Pier 1 at San Francisco, CA 94111.  
**BIDS DUE:** 6/25/14, 1:30 PM.  
For questions, contact **Wendy Proctor (415) 274-0592**.

### Assessment Appeals Board (AAB)

Notice is hereby given of 6 vacancies on the AAB. Applicants must have at least 5 years experience as one of the following: Certified Public Accountant or Public Accountant; Licensed Real Estate Broker; Property Appraiser accredited by a nationally recognized organization, or Property Appraiser certified by the California Office of Real Estate Appraisers. For additional information or to obtain an application, please call 415-554-6778.

### From the Department of the Environment

Guess what? San Francisco has a website that tells you how and where to recycle almost anything!  
[sfenvironment.org/recyclewhere](http://sfenvironment.org/recyclewhere)

### Board of Supervisors Regularly Scheduled Board Meetings

June & July 2014

OPEN TO THE PUBLIC - Come see your San Francisco government in action.

Tuesdays, 2:00pm, City Hall Chamber, Room 250.

• June 3	• June 10
• June 17	• June 24
• July 8	• July 15
• July 22	• July 29

The City and County of San Francisco encourage public outreach. Articles are translated into several languages to provide better public access. The newspaper makes every effort to translate the articles of general interest correctly. No liability is assumed by the City and County of San Francisco or the newspapers for errors and omissions.

CNS#2626644

# UCLA

UCLA

### ADVERTISEMENT FOR BIDS

The following is a summary of a full Advertisement for Bids posted on the UCLA Capital Programs Website (<http://www.capitalprograms.ucla.edu/Contracts/ProjectsCurrentlyBidding>). **All interested parties must go to the Website for complete information.**

Subject to conditions prescribed by the University of California, Los Angeles, sealed bids for a lump-sum contract are invited for the following work:

**Project Name:** PARKING STRUCTURE 2 - WAYFINDING SIGNAGE

**Project Number:** 4011104

**Description of Work:** Partially remove existing signage and provide new signage, monument signage, hanging signage and paint surfaces as described in the construction documents. Refer to website above for complete description.

**Estimated Construction Cost:** \$200,000.00

**Bidding Documents Available at:**

UCLA Online Planroom

Website: <http://www.uclaplanroom.com/>

*"UCLA has been advertising with the Small Business Exchange since 1993 with excellent results."*

Donna Hansen, UCLA

*"SBE is able to handle ads in a certain target area and in a diverse marketplace."*

Eileen Martinez, The Daily Journal

*The Small Business Exchange has been providing advertising services for the San Francisco Department of Public Works for ten years . . . and has met our specific requirements . . . The Department has been more than satisfied.*

Gordon Choy,  
San Francisco Department of Public Works  
former Division Manager  
DPW Contract Administration

**BUSINESS**

**Concerned about DBE Compliance?**  
SBE helps businesses with targeted outreach to find the firms you need.

Whether You're a Small Business Looking for Opportunities, or a Prime or Agency Seeking Small Businesses, The Small Business Exchange has the resources you need to succeed!

Let us help you find the firms you need.

Visit SBE Website  
[www.sbeinc.com](http://www.sbeinc.com)

**Visit SBE Website**  
[www.sbeinc.com](http://www.sbeinc.com)



# Success Delivered

## SBE Outreach Services:

### Diversity outreach services

- Matching of buyer and seller
- Integrated print, electronic and digital telemarketing information system
- Full reporting and documentation

### SBE database of 1.5 million businesses in 50 states

- SBE imports from the SBA, DOT, state and local agencies on a regular basis, ensuring the most up-to-date information

### [www.sbeinc.com](http://www.sbeinc.com)

Our website is where the most current bid information is made available Our archive of articles and bid information is an important resource for business development

### SBE publications

- SBE weekly newspaper in both print and electronic format
- SBE Today daily E-newsletter
- SBE Northeast monthly

### Advertising in SBE publications

- Public notices
- Request for sub-bids
- Classified Ad
- Display

### Targeted Mailing/Faxing/Emailing

By focus group, industry type(s), certification and other requirements

### SBE directory

SBE directory helps firms market themselves to prime contractors, highlighting each company's expertise, experience on similar projects, insurance coverage and business philosophy

It is provided to prospective contractors bidding on segments of a project, as well as to city, state and federal agencies

### National diversity project planroom

SBE offers a virtual planroom with an online estimating tool, a time-saving application to assist small businesses

### WHAT SATISFIED CLIENTS SAYS ABOUT OUR SERVICES

"Small Business Exchange is one of the partners we use for outreach. We solicit their help to meet our goals. SBE's expertise and thorough documentation was especially helpful during the challenge process with the Disadvantaged Business Enterprise Reconsideration Panel upholding our awarded contract."

- Skanska USA Civil West California District Inc.

"Thank you for a great job, very much appreciated by the team"

- Schiavone Construction

"They are very Committed to helping us meet the necessary requirements of the many different public agencies we deal with, and deliver competent, qualified bidders at the same time. SBE has some very good resources and continues to keep there databases up to date with certified DVBE, DBE, SBE, WBE etc..."

- Robert A Bothman, Inc.

# Subscribe to the SBE Weekly Newspaper

Choose an option that meets your needs...

#1 \$250  
Includes 1 year subscription to SBE newspaper with bid notices

#2 \$220  
Includes 1 year subscription to bid notice service by fax

#3 \$200  
Includes 1 year subscription to bid notice service by email OR by online access

**\* Options include no more than 3 sub-categories per subscription**

If you signed up for fax or E-mail services, list the criteria that best describes your services.

Search Words:	Location(s) (optional):
_____	_____
_____	_____
_____	_____
_____	_____

- Subscriptions are non-refundable. Subscriptions begin upon receipt of payment.
  - Make check payable to: Small Business Exchange, Inc.
  - Mail payment & form to: 703 Market Street Suite 1000, San Francisco, CA 94103
- You can also Fax your subscription form to us at (415) 778-6255

### I would like to receive bid updates by

- Internet (login information will be emailed)       Fax       Email

### Please choose the general category:

- Construction       Business Services
- Professional Services       Commodities

(You will be sent a list of sub-categories from which to chose.)

### List location(s) of where your company will work:

\_\_\_\_\_

Company Name: \_\_\_\_\_

Contact: \_\_\_\_\_

Address: \_\_\_\_\_

City/State/Zip: \_\_\_\_\_

Phone: \_\_\_\_\_ Fax: \_\_\_\_\_

Email: \_\_\_\_\_

- Check Enclosed       Charge (circle one) VISA/MC/AMEX

Account #	Exp. Date																			
<table border="1" style="width: 100%; height: 20px;"><tr><td> </td><td> </td><td> </td><td> </td><td> </td><td> </td><td> </td><td> </td><td> </td><td> </td><td> </td><td> </td><td> </td><td> </td><td> </td></tr></table>																<table border="1" style="width: 100%; height: 20px;"><tr><td> </td><td> </td><td> </td><td> </td></tr></table>				

# Fictitious Business Name • Abandonment

FICTITIOUS BUSINESS NAME STATEMENT File No. A-0358187-00	FICTITIOUS BUSINESS NAME STATEMENT File No. A-0358409-00	FICTITIOUS BUSINESS NAME STATEMENT File No. A-0358115-00	FICTITIOUS BUSINESS NAME STATEMENT File No. A-0358191-00	FICTITIOUS BUSINESS NAME STATEMENT File No. A-0358140-00	FICTITIOUS BUSINESS NAME STATEMENT File No. A-0358596-00
<p>Fictitious Business Name(s): <b>ANIMA PSYCHOTHERAPY</b> Address <b>1728 Union Street, Suite 304 San Francisco, CA 94123</b> Full Name of Registrant #1 <b>Jennifer Caplan</b> Address of Registrant #1 <b>9A Marion Avenue, Sausalito, CA 94965</b></p> <p>This business is conducted by <b>An Individual</b>. The registrant(s) commenced to transact business under the fictitious business name(s) listed above on <b>Not Applicable</b></p> <p>Signed: <b>Jennifer Caplan</b></p> <p>This statement was filed with the County Clerk of San Francisco County on <b>5/5/2014</b>.</p> <p>Notice: This fictitious name statement expires five years from the date it was filed. A new fictitious business name statement must be filed prior to this date. The filing of this statement does not of itself authorize the use in this state of a fictitious business name in violation of the right of another under Federal, State or Common Law</p> <p>Filed: <b>Jeanette Yu Deputy County Clerk 5/5/2014</b></p> <p><u>5/15/14 + 5/22/14 + 5/29/14 + 6/5/14</u></p>	<p>Fictitious Business Name(s): <b>Cafe Capriccio</b> Address <b>2200 Mason Street, San Francisco, CA 94133</b> Full Name of Registrant #1 <b>Gerardo Gay Meza</b> Address of Registrant #1 <b>331 Amazon Avenue, San Francisco, CA 94112</b></p> <p>This business is conducted by <b>An Individual</b>. The registrant(s) commenced to transact business under the fictitious business name(s) listed above on <b>5/16/2014</b></p> <p>Signed: <b>Gerardo Gay Meza</b></p> <p>This statement was filed with the County Clerk of San Francisco County on <b>5/16/2014</b>.</p> <p>Notice: This fictitious name statement expires five years from the date it was filed. A new fictitious business name statement must be filed prior to this date. The filing of this statement does not of itself authorize the use in this state of a fictitious business name in violation of the right of another under Federal, State or Common Law</p> <p>Filed: <b>Maribel Jaldon Deputy County Clerk 5/16/2014</b></p> <p><u>5/22/14 + 5/29/14 + 6/5/14 + 6/12/14</u></p>	<p>Fictitious Business Name(s): <b>David Baker Architects</b> Address <b>461 2nd Street, C127 San Francisco, CA 94107</b> Full Name of Registrant #1 <b>David Baker, An Architectural Corporation (CA)</b> Address of Registrant #1 <b>461 2nd Street, C127 San Francisco, CA 94107</b></p> <p>This business is conducted by <b>A Corporation</b>. The registrant(s) commenced to transact business under the fictitious business name(s) listed above on <b>1/1/2013</b></p> <p>Signed: <b>David Baker</b></p> <p>This statement was filed with the County Clerk of San Francisco County on <b>4/30/2014</b>.</p> <p>Notice: This fictitious name statement expires five years from the date it was filed. A new fictitious business name statement must be filed prior to this date. The filing of this statement does not of itself authorize the use in this state of a fictitious business name in violation of the right of another under Federal, State or Common Law</p> <p>Filed: <b>Jennifer Wong Deputy County Clerk 4/30/2014</b></p> <p><u>5/08/14 + 5/15/14 + 5/22/14 + 5/29/14</u></p>	<p>Fictitious Business Name(s): <b>San Francisco USA Artist Exchange Association</b> Address <b>37 Ervine Street, San Francisco CA 94134</b> Full Name of Registrant #1 <b>Jinyu Chen</b> Address of Registrant #1 <b>37 Ervine Street, San Francisco CA 94134</b></p> <p>This business is conducted by <b>An Individual</b>. The registrant(s) commenced to transact business under the fictitious business name(s) listed above on <b>5/5/2014</b></p> <p>Signed: <b>Jinyu Chen</b></p> <p>This statement was filed with the County Clerk of San Francisco County on <b>5/5/2014</b>.</p> <p>Notice: This fictitious name statement expires five years from the date it was filed. A new fictitious business name statement must be filed prior to this date. The filing of this statement does not of itself authorize the use in this state of a fictitious business name in violation of the right of another under Federal, State or Common Law</p> <p>Filed: <b>Maribel Jaldon Deputy County Clerk 5/5/2014</b></p> <p><u>5/15/14 + 5/22/14 + 5/29/14 + 6/5/14</u></p>	<p>Fictitious Business Name(s): <b>SF Bay Scrubs</b> Address <b>1918 Filbert Street #301, San Francisco, CA 94123</b> Full Name of Registrant #1 <b>Michelle Elaine Kleier</b> Address of Registrant #1 <b>1918 Filbert Street #301, San Francisco, CA 94123</b></p> <p>This business is conducted by <b>An Individual</b>. The registrant(s) commenced to transact business under the fictitious business name(s) listed above on <b>Not Applicable</b></p> <p>Signed: <b>Michelle Kleier</b></p> <p>This statement was filed with the County Clerk of San Francisco County on <b>5/1/2014</b>.</p> <p>Notice: This fictitious name statement expires five years from the date it was filed. A new fictitious business name statement must be filed prior to this date. The filing of this statement does not of itself authorize the use in this state of a fictitious business name in violation of the right of another under Federal, State or Common Law</p> <p>Filed: <b>Jennifer Wong Deputy County Clerk 5/1/2014</b></p> <p><u>5/08/14 + 5/15/14 + 5/22/14 + 5/29/14</u></p>	<p>Fictitious Business Name(s): <b>Fast N Fresh</b> Address <b>28 Minerva Street, San Francisco, CA 94112</b> Full Name of Registrant #1 <b>Sami Akhavan Rad</b> Address of Registrant #1 <b>18324 Clark Street #509, Tarzana, CA 91356</b> Full Name of Registrant #2 <b>Ramin Azizi</b> Address of Registrant #2 <b>28 Minerva Street, San Francisco, CA 94112</b> Full Name of Registrant #3 <b>Radnoosh Aminrad</b> Address of Registrant #3 <b>28 Minerva Street, San Francisco, CA 94112</b></p> <p>This business is conducted by <b>A General Partnership</b>. The registrant(s) commenced to transact business under the fictitious business name(s) listed above on <b>5/28/2014</b></p> <p>Signed: <b>Sami Akhavan Rad</b></p> <p>This statement was filed with the County Clerk of San Francisco County on <b>5/28/2014</b>.</p> <p>Notice: This fictitious name statement expires five years from the date it was filed. A new fictitious business name statement must be filed prior to this date. The filing of this statement does not of itself authorize the use in this state of a fictitious business name in violation of the right of another under Federal, State or Common Law</p> <p>Filed: <b>Jeanette Yu Deputy County Clerk 5/16/2014</b></p> <p><u>6/5/14 + 6/12/14 + 6/19/14 + 6/26/14</u></p>

## Public Legal Notices

### UNIVERSITY OF CALIFORNIA SAN FRANCISCO

#### ADVERTISEMENT FOR BIDS

Subject to conditions prescribed by the University of California, San Francisco, sealed bids for a lump sum contract are invited for the following Work:

#### MISSION BAY DCI, PHASE 2 - REBID Project No.: **M3622** / Contract No.: **SL0274**

#### DESCRIPTION OF WORK:

Scope of work includes build out and changes to existing Data Center at 654 Minnesota Street. Provide a complete cold aisle containment system with security partitions and doors, new server cabinets, key access control cabinet, and relocate lighting as shown on documents.

**BIDDER QUALIFICATIONS:** To be eligible for consideration of award, bidders must have the minimum experience set forth in the Supplementary Instructions To Bidders. Bidders must submit qualification documents as via the online Supplier Registration and Sourcing (SRS) system with the Bid Form.

#### PROCEDURES:

Bidding Documents will be available beginning **May 29, 2014** at **12NN** by requesting via e-mail to [RFx@ucsf.edu](mailto:RFx@ucsf.edu) with the following information: Company name, address, phone and fax nos. Please reference Project No. M3622-REBID in the subject line. You will be sent an email with a link to register with the UC Supplier Registration and Sourcing (SRS) system in order to obtain the bidding document.

Bidders must attend a **mandatory** pre-bid conference at **10AM, June 2, 2014**. For details, see <http://contracts.ucsf.edu/contractors/>

(Use the same website above to view complete Advertisement for Bids - Project Bidding Information).

(NOTE: Contractors interested in bidding this project must have attended either the 1st pre-bid which occurred on 5/7/14 or the 2nd pre-bid on 6/2/14).

Sealed bids must be received on or before **3:00 PM, June 16, 2014** using the UC SRS system accessible through <https://suppliers.sciquest.com/UCOP/>. Bids will be opened at **3:05 PM** at Minnesota St. Finance Service Center, University of California, San Francisco, 654 Minnesota Street, 2nd Floor, San Francisco, CA 94107. Phone: (415) 476-5343.

Every effort will be made to ensure that all persons have equal access to contracts and other business opportunities with the University within the limits imposed by law or University policy. Each Bidder may be required to show evidence of its equal employment opportunity policy. The successful Bidder and its subcontractors will be required to follow the nondiscrimination requirements set forth in the Bidding Documents and to pay prevailing wage at the location of the work.

The work described in the contract is a public work subject to section 1771 of the California Labor Code.

The successful Bidder will be required to have the following California current and active contractor's license at the time of submission of the Bid:

**LICENSE CLASSIFICATION:**  
**General Building Contractor**

**LICENSE CODE: B**

ESTIMATED CONSTRUCTION COST: \$400,000

THE REGENTS OF THE UNIVERSITY OF CALIFORNIA  
University of California, San Francisco  
April, 2014/Rebid May, 2014

### UNIVERSITY OF CALIFORNIA, IRVINE MEDICAL CENTER

#### ANNOUNCEMENT TO PREQUALIFIED PROPOSERS

UC Irvine Medical Center (UCIMC) invites prequalified Proposers to submit proposals for the **B1 Basement - Pulmonary Expansion, Project No. 999120. Maximum Acceptance Cost: \$356,000.**

**DESCRIPTION OF WORK:** Relocate the Pulmonary Program to the Douglas Hospital basement including conversion of a storage room to a Bronchoscopy Room and installation of an isolated exhaust from the new Bronchoscopy Room to the Douglas Hospital roof. Work includes framing, electrical, structural support, medical gases and other work for a complete project in compliance with all applicable codes including Office of Statewide Health Planning and Development (OSHPD) requirements. Project completion time: 240 Calendar Days

**PROJECT DELIVERY:** Design Build

**PREQUALIFIED PROPOSERS:** **Brascia Builders, Inc.**, Monrovia, CA 91016, (626) 737-0284; **BNBuilders**, San Diego, CA 92121, (858) 550-9433; and **DLS Builders**, Orange, CA 92865, (714) 998-3790.

**PROCEDURES:** RFP available **6/3/14, 2 PM**. Prequalified Proposers receive **2** sets at UCIMC Planning Administration, Building 27, 101 The City Drive South, Orange, CA 92868. Purchase at American Reprographics Co., Costa Mesa, CA (949) 751-2680. Planrooms: F.W. Dodge (626) 932-6120 and Reed (800) 424-3996.

**MANDATORY PREPROPOSAL CONFERENCE & SITE VISIT: 6/6/14, 10:00 AM**, UCIMC, Building 22A, Rm. 2103, 101 The City Drive South, Orange, CA 92868.

**PROPOSALS DUE:** Technical Proposal, **7/15/14, 4 PM** and Lump Sum Base Price Proposal, **7/16/14, 4 PM** received only at UCIMC Planning Administration, Building 27, Rm. 136, 101 The City Drive South, Orange, CA 92868.

Required: **General Building Contractor - B**, California Contractors License and 10% bid bond from *admitted surety insurer (as defined in the California Code of Civil Procedure Section 995.120)*. The successful GC and its subs are required to follow the nondiscrimination requirements set forth in the RFP and pay prevailing wage rates at the location of the Work.

Every effort will be made to ensure that all persons shall have equal access to contracts and other business opportunities with the University, regardless of: race; color; religion; sex; age; ancestry; national origin; sexual orientation; physical or mental disability; veteran's status; medical condition; genetic information; marital status; gender identity; pregnancy; service in the uniformed services; or citizenship within the limits imposed by law or University's policy.

David Donovan, Project Delivery Manager, (714) 456-5628, [ddonovan@uci.edu](mailto:ddonovan@uci.edu)

Bid Board: [www.designandconstruction.uci.edu](http://www.designandconstruction.uci.edu)





# Access to Capital

## SMALL & MINORITY BUSINESS

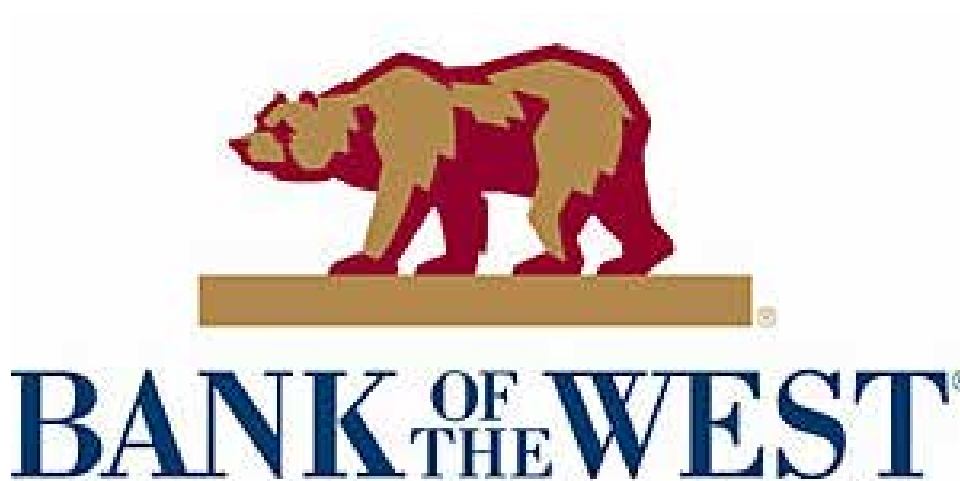
# Bank of the West Opens Wealth Management Center in Newport Beach

Location is Dedicated to Serving Wealth Management Clients in Orange County

Bank of the West today announced the opening of its new wealth management center in Newport Beach, located at 4400 MacArthur Boulevard. Situated on the first floor of the building, this center is the hub of the bank's growing wealth management presence in Orange County, serving affluent and high net worth clients' specific needs. To formally welcome clients to its new center, Bank of the West will hold a community grand opening event on May 28, from 4 to 6 p.m., with special guest Newport Beach Mayor Rush Hill. As part of the celebration and as a token of appreciation to the Newport Beach community, Bank of the West will present a donation to Project Access to aid the non-profit organization in its mission to provide education and employment services to families, children and seniors living in low-income housing communities.

"Ever since we relaunched our wealth management offering several years ago, we've had a very strong and positive response from clients in Orange County. Given our growth locally, we're proud to now provide a comfortable, private and dedicated space for our clients, conveniently located next to one of our newest retail banking branches," said John Bahnken, head of the bank's Wealth Management Group and senior executive vice president. "We're finding that our affluent and high net worth clients appreciate meeting with us in a space that enables us to bring our team together and talk with them about all of their needs, including retirement, strategic use of credit, business transitions, investment management, financing education for future generations and legacies, estates and trusts."

"We have a wide range of clients, from small to mid-size business owners and corporate executives to those who have inherited their wealth," said Edward Mora, senior vice president and market



leader for the Orange County wealth management team. "With our team-based approach, we now have the perfect space to work closely with our clients on very individualized and holistic plans that help to build, maintain, protect and transfer their wealth."

Boasting a sleek and contemporary design, the new center showcases artwork by celebrated California artists commissioned by Bank of the West. In the lobby, a triptych of glass art by Orange County award-winning glass artist Margaret Willmoth Jensen titled "Harmony" will be on display. Inspired by the Newport coast, it seeks to bring nature into the space. Paintings from Northern California artist Susan Jenkins are also featured throughout the office.

The Newport Beach location adds to Bank of the West's expanding number of wealth management centers, now found in San Francisco, San

Jose, Palo Alto, Walnut Creek, Denver, Los Angeles, Beverly Hills and Pasadena.

Bank of the West Wealth Management provides wealth planning consulting, investment management\*, personal banking and trust services. The group is part of BNP Paribas' global wealth management business of more than 6,000 professionals in 30 countries worldwide with over \$10 billion\*\* in assets under management in the United States and \$397 billion (€288 billion) in assets under management globally as of December 31, 2013.

#### About Bank of the West

Founded in 1874, \$65 billion-asset Bank of the West ([www.bankofthewest.com](http://www.bankofthewest.com)), Member FDIC and Equal Housing Lender, offers a wide range of personal, commercial, wealth management and international banking services. The bank operates more than 600 retail and commercial banking

locations in 19 Western and Midwestern states. Bank of the West is a subsidiary of BNP Paribas, which has a presence in 80 countries with nearly 200,000 employees.

\*Securities and variable annuities are offered through BancWest Investment Services, Inc., a registered broker/dealer, Member FINRA/SIPC. Financial Advisors are registered representatives of BancWest Investment Services, Inc. Fixed annuities/insurance products are offered through BancWest Insurance Agency in California (License # 0C52321) and through BancWest Insurance Agency in Utah, and through BancWest Investment Services in AZ, CO, IA, ID, KS, MN, MO, ND, NE, NM, NV, OK, OR, SD, WA, WI, WY, HI, GUAM and CNMI. Bank of the West and its various affiliates and subsidiaries are not tax or legal advisors.

Bank of the West Wealth Management provides financial products and services through Bank of the West and its various affiliates and subsidiaries.

BancWest Investment Services is a wholly owned subsidiary of Bank of the West and a part of the Wealth Management Group. BancWest Corporation is the holding company for Bank of the West. BancWest Corporation is a wholly owned subsidiary of BNP Paribas.

#### Investment and Insurance Products are:

NOT FDIC INSURED • NOT BANK GUARANTEED • MAY LOSE VALUE • NOT A DEPOSIT • NOT INSURED BY ANY FEDERAL GOVERNMENT AGENCY

\*\* Including assets under supervision at BancWest Investment Services

Source: ©2013 Bank of the West.

## Big U.S. banks must boost capital by \$68 billion under new rules

By Emily Stephenson

The eight biggest U.S. banks must boost capital levels by a total of about \$68 billion under new rules, U.S. regulators said on Tuesday, prompting industry complaints that less-stringent global standards will give overseas competitors an advantage.

The rules would limit banks' reliance on debt, part of efforts to prevent another financial crisis. By 2018, banks must rely more on funding sources such as shareholder equity, rather than borrowing money.

Banks' insured subsidiaries face tougher limits and must boost capital holdings by a total of about \$95 billion, regulators said.

Officials said most firms are already on track to comply and could meet the requirements by retaining earnings, or could shrink or restructure some assets to reduce capital needs.

The final rules show regulators are unwilling to budge from an increasingly tough stance on banking requirements, as they seek to shore up banks after the 2007-2009 financial crisis.

"In my view, this final rule may be the most significant step we have taken to reduce the systemic risk posed by these large, complex banking organizations," said Martin Gruenberg, chairman of the Federal Deposit Insurance Corp (FDIC).

The rule would apply to JPMorgan Chase, Citigroup, Bank of America, Wells Fargo, Goldman

Sachs, Morgan Stanley, Bank of New York Mellon and State Street.

The Financial Services Roundtable, a trade group for large banks, issued a statement blasting the limits, which are more stringent than the international Basel III agreement.

"This rule puts American financial institutions at a clear disadvantage against overseas competitors," said Tim Pawlenty, the group's chief executive.

The FDIC, Federal Reserve and Office of the Comptroller of the Currency approved the rules, implementing a portion of the Basel III agreement known as the leverage ratio, which is calculated as a percentage of a bank's total assets.

The rules require the eight biggest bank holding companies to maintain top-tier capital equal to 5 percent of total assets. Insured bank subsidiaries must meet a 6 percent ratio. That's higher than the 3 percent ratio included in the Basel agreement.

Smaller U.S. banks would be held to the 3 percent ratio, regulators said.

Scott Alvarez, the Fed's general counsel, told a congressional panel on Tuesday that the 18 biggest banks have already boosted top-tier capital levels by more than \$500 billion since 2008. He did not break down the total to show how much the top eight banks increased their capital.

■ Continued on page 15

# Access to Capital

## SMALL & MINORITY BUSINESS

# Banks Gain Insight Into Supplier Diversity

by Kathleen Krueger

Data is key in being knowledgeable about facts. Studies show strong opportunities for minority businesses to increase their participation as suppliers to the banking industry.

In a recent study conducted by the Greenlining Institute, entitled "Escaping the Old Boy Network: The Banking Industry and Supplier Diversity," important data regarding the participation of Minority Business Enterprises (MBEs) was revealed. The study, authored by Danielle Beavers, Economic Equity Program Manager, and Sasha Werblin, Economic Equity Director for the Greenlining Institute, follows the Institute's previous study of supplier diversity within the insurance industry.

Danielle Beavers, in her interview with DyNAMC, explained they were quite pleased with the willingness of California banks to participate and share their supplier diversity data (information that is not required to be collected or submitted by government regulation). The 12 largest banks in California were invited to be a part of the study, and eight of those banks agreed to participate. The findings of the study brought several issues to light. First, only five of the participating banks track state-specific spending. Without state-specific tracking, it becomes difficult to determine

the true participation level of MBEs with these banks in relation to the minority population of their locations. Secondly, there are no uniform standards for the banking industry to measure investment in supplier diversity. This makes it impossible to carry out an accurate comparison from one bank to another. The report would encourage the Federal Office of Minority and Women Inclusion to create standard reporting regulations that would assist the financial industry in measuring and reporting their supplier participation consistently and with transparency.

### Key Findings of the Report

In spite of the lack of standardization, the study did provide important insights into the banking industry and its current use of suppliers, both nationally and in the state of California.

**National Supplier Diversity.** On a national level, the banks surveyed showed a very low percentage of minority supplier participation. The MBE supplier participation ranged from 3.46 percent to 8.37 percent, with a median of 5.96 percent for the banks surveyed. Bank of America stood out in the study, as it was responsible for almost half of the dollars paid out to MBE suppliers from the group's total tally.

**California Supplier Diversity.** For those banks that did provide state specific tracking, California numbers provided another perspective. In a state

with a population that is made up of 60 percent people of color, the median MBE supplier participation rate was only 7.72 percent. Although the California percentage is higher than the national average, it continues to demonstrate a wide disparity between the minority population and the utilization of minority suppliers.

**Strong opportunities for MBEs** One of the most positive findings of the report was the level of spending by the banking industry with service and supply vendors. Just within the eight participating banks, the amount spent on goods and services in 2012 totaled \$51.05 billion dollars. With only six to eight percent of those expenditures currently going to MBEs, that provides an opportunity for significant growth in participation.

Even without the standardization in reporting needed for comprehensive and conclusive statistics, Beavers believes the report by the Greenlining Institute has provided the banking industry with substantive knowledge about its lack of diversification in supplier spending. It has also supplied MBEs with the knowledge on an industry opportunity that is greater than they may have perceived. With this knowledge in hand, the banking industry and MBE suppliers have gained added incentive to make a positive change to the statistics.

**Source:** ©2014 The Greenlining Institute.

## Big U.S. Banks

Continued from page 14

### LEVERAGE LIMITS

The Basel III accord included both a leverage ratio and risk-based capital requirements, which take into account the riskiness of banks' assets.

Banks and other critics of leverage rules say they are draconian and that risk-based capital requirements are more tailored to banks' businesses.

While the rule may strengthen banks, "the potential for adverse effects on market liquidity and the strength of the system going forward could be real," Oliver Ireland, an attorney at Morrison & Foerster in Washington, said in an email.

U.S. regulators said risk-based capital requirements are easier to game than leverage rules. They said the 3 percent Basel leverage ratio would not have been high enough to sustain many banks through the financial crisis.

"The leverage ratio serves as a critical backstop to the risk-based capital requirements," said Fed Governor Daniel Tarullo, adding that regulators could write extra capital requirements for banks that rely on risky, short-term funding.

### TOUGHER MODEL

The agencies also voted to issue a separate proposal to adjust the way banks tally up their assets under the leverage rules. The proposal, which would have to be finalized later, changed those calculations to bring them more in line with the Basel rules.

Regulatory officials said the proposed changes would apply to banks meeting the 3 percent Basel ratio as well as the eight biggest firms.

Regulators said the changes would result in a "modest" increase in the amount of capital banks would need to hold.

They said banks needed \$22 billion in additional capital under the old calculation model, compared to \$68 billion with the Basel method. The proposed changes count credit derivatives more and traditional loans less than the original model did. Chip MacDonald, a banking lawyer at Jones Day, said the difference of \$46 billion in capital between the two calculation systems was "more than a tweak."

"Unless something particularly compelling can be demonstrated through the comment process, we're going to end up with a much more stringent leverage requirement on the largest banks," said Kevin Petrasic, a partner in the global banking practice of law firm Paul Hastings.

Banks have until June to comment on the proposed changes.

(Additional reporting by Douwe Miedema and Peter Rudegeair. Additional reporting by David Henry; Editing by Karey Van Hall, Leslie Adler, Bernadette Baum and David Gregorio)

**Source:** <http://www.reuters.com>

# Public Legal Notices

## SAN JOSE STATE UNIVERSITY

### NOTICE TO PROPOSERS REQUEST FOR STATEMENT OF QUALIFICATIONS (RFQ)

The Trustees of the California State University (Trustees) are requesting Statements of Qualifications (SOQ) from interested and qualified entities herein called Respondents who wish to participate in a competitive selection process for the design and construction of the Joe West Hall Boiler Replacement Project, Project Number SJSU-298 at San Jose State University.

In general, the scope work consist of the design and replacement of the mechanical equipment for the heating (HHW) and the domestic hot water boilers (DHW), and the associated pumps for the Joe West Hall dormitory.

The delivery method for this project is Design-Build. In this process the Contractor, consisting of contractor and designer, is selected based on qualifications and fees. A contract will be executed with the successful Respondent. A RFQ Conference meeting for this project is scheduled for Wednesday, June 04, 2014 at 10:00 am and all interested parties are invited. The meeting will be held in the San Jose State Campus, Facilities Development and Operations Building, 404 East San Fernando Street, San Jose, CA 95112, 2nd Floor Conference Room. Attendees are asked to pre-register not later than June 03, 2014 by emailing Sylvia Sosa, Senior Contracts Specialist, Email: [sylvia.sosa@sjsu.edu](mailto:sylvia.sosa@sjsu.edu).

Respondents must hold a B General Building Contractor and a C-4 Boiler, Hot Water Heating and Steam Fitting Contractor or C-36 Plumbing Contractor California license. The SOQ Submittal Due Date is Thursday, June 19, 2014 at 3:00 pm. The estimated Construction Cost is \$800,000.

RFQ documents are available online at Planetbids website. Respondents may obtain the complete RFQ by registering at <http://www.planetbids.com/portal/portal.cfm?CompanyID=15275> and log into planetbids.com at <http://www.planetbids.com/hub/hub.cfm> and search for "Joe West Hall Boiler Replacement Project, Project Number: SJSU-298" and download the RFQ. If you have problems viewing this website, contact Sylvia-Sosa Galindo, Senior Contracts Specialist, Phone" 408-924-2246, Email: [sylvia.sosa@sjsu.edu](mailto:sylvia.sosa@sjsu.edu).

Respondents must be prequalified with the Trustees, and shall submit their prequalification application no

less than ten business days prior to SOQ submittal due date. For information regarding the

prequalification application go to [http://www.calstate.edu/cpdc/cm/contractor\\_prequal\\_bidders.shtml](http://www.calstate.edu/cpdc/cm/contractor_prequal_bidders.shtml).

The Trustees require a three percent Disabled Veteran Business Enterprise participation. This project is public works project and is subject to prevailing wages rate laws.

## PORT OF SAN FRANCISCO

The Port of San Francisco is issuing a Request for Proposals (RFP) for a retail space located at Pier 33 North (33 1/2) on the Embarcadero at the foot of Bay Street to San Francisco based small businesses currently working with one of the San Francisco community-based organizations that provide technical assistance to emerging small businesses. The RFP is available for pick up at Pier 1, The Embarcadero or downloaded for the Port's website [www.SFPport.com](http://www.SFPport.com) (<http://www.sfport.com/index.aspx?page=18>) For more information you may contact Jay Edwards in writing at [Jay.Edwards@SFPport.com](mailto:Jay.Edwards@SFPport.com) or Jeff Bauer at [Jeff.Bauer@SFPport.com](mailto:Jeff.Bauer@SFPport.com).

Submittals must be delivered by hand to the Port of San Francisco, Pier 1, San Francisco CA 94111, no later than 3:00 P.M. PST on Monday August 11, 2014.

5/1, 5/8, 5/15, 5/22/14

CNS-2616522#

SMALL BUSINESS EXCHANGE

SMALL BUSINESS EXCHANGE





# Success Delivered

Small Business Exchange, Inc.

## CLASSIFIED AD

- Post Your Job Opportunities!
- Advertise Available Office Space!
- List Public/Legal Notices!

**ONLY \$5.89**  
per line

### AD Samples

WORK FOR  
the best as a warehouse operative!  
Full/Part time positions available.  
Work with special needs population.  
No experience required.  
Training provided.  
Legal background is helpful.  
Interested candidate should contact  
clarkesteven1@aol.com.

**Active Contractor's License**  
for Sale: (888) 926-9193

BackFirst is seeking the following candidates for our  
**S.F. On-Site Fitness and Wellness Program:**  
Dietician, Personal Trainer, Tai Chi Instructor.  
Experience required.  
For info re: plans, specifications and work requirements,  
please call (415) 302-5472.

Take advantage of Small Business Exchange extensive distribution—

## Advertise your job opportunities with us

Advertisements are ALSO automatically featured online at <http://www.sbeinc.com/advertising/>

### CLASSIFIED AD INFORMATION

**TO PLACE AN AD:** Email your ad to NABIL VO at [nvo@sbeinc.com](mailto:nvo@sbeinc.com) or by fax 415-778-6255.

Please include credit card number and expiration date.

**PAYMENT:** All ads must be paid in advance. Money order, or imprinted checks. Credit Cards by telephone, mail, or fax; American Express, VISA, and MASTERCARD.

START HERE, (Please Print Legibly)																						

First line has 15 spaces, subsequent lines have 22 spaces. Every letter, punctuation mark, or space between words counts as a space.

Name \_\_\_\_\_

Address \_\_\_\_\_

City \_\_\_\_\_

Zip \_\_\_\_\_

Method of Payment  CHECK  MONEY ORDER  MASTERCARD  AMEX  VISA

Credit Card Number: \_\_\_\_\_

Expiration

Date: \_\_\_\_\_ Signature \_\_\_\_\_

\_\_\_\_\_ Reference Number (Office Use Only) \_\_\_\_\_

**Classified displays ads may be prepaid or billed.**

**RATES:** CLASSIFIED DISPLAY Open rate: \$5.89 per line.

**TERMS:** We reserve the right to reject or cancel advertising for any reason deemed appropriate.

**DEADLINE:**  
**Wednesday before 3:00 PM.**  
**SBE Weekly Newspaper**  
**is published every Thursday**

**CATEGORIES**  
(Please check the category you are submitting.)

- Announcements & Information
- Appliance
- Automotive
- Business Opportunities
- Carpentry
- Ceramic / Tile
- Cleaning Services
- Construction
- Electrical
- Employment
- Financial Services
- For Sale
- Handyman
- Hardwood
- Hauling
- Landscaping
- Legal Services
- Miscellaneous
- Office Equipment
- Painting
- Plumbing
- Professional Services
- Real Estate
- Wanted to Buy